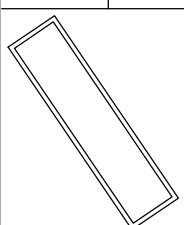


- STANDARD ACCESSORIES:**
- REMOVABLE ENABLING KEY FOR THE CABIN BUTTON PANEL
  - REMOVABLE ENABLING KEY FOR THE FLOOR BUTTON PANEL
  - PUSH BUTTON PANEL VERTICAL
  - SHAFT LIGHTING
- NOT STANDARD ACCESSORIES:**
- FULL HEIGHT INFRA-RED CURTAIN

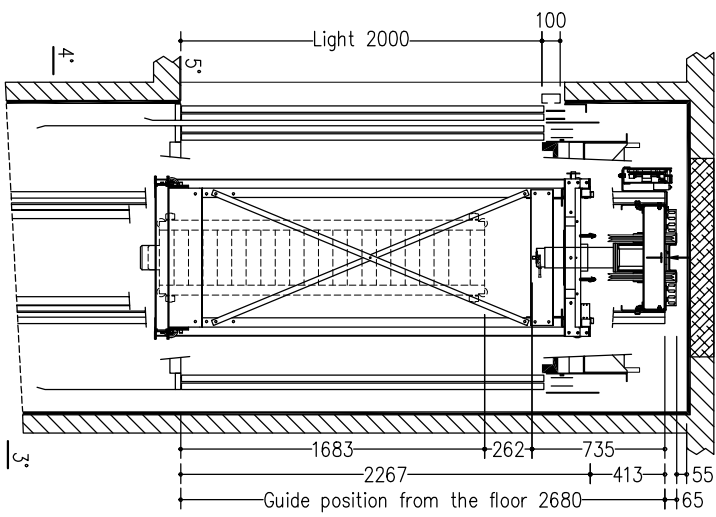
cabin	ATLANTIS - SM
cabin mass and operators (Kg)	421
panels	INOX Scotch Brite
finishings	INOX Scotch Brite
floor	NON DEFINITO
push button panel	Verticale a n° 8 fori + GONG
roof	Disegno Damro Bianco Al
cabin doors colour	INOX Scotch Brite (oper. CMM)
landing doors colour	INOX Scotch Brite
frame landing doors colour	INOX Scotch Brite
electrical s. cabinet colour	INOX Scotch Brite

Shaft typology:	MASONRY
Stops:	5
Doors:	5
Sheet	1/2
Sheet dimension	A3
Scale	1/15
Drawing by	Daniilo Tomei
first draft	28/08/2007
final drawing	
MODEL	SUPERMEC

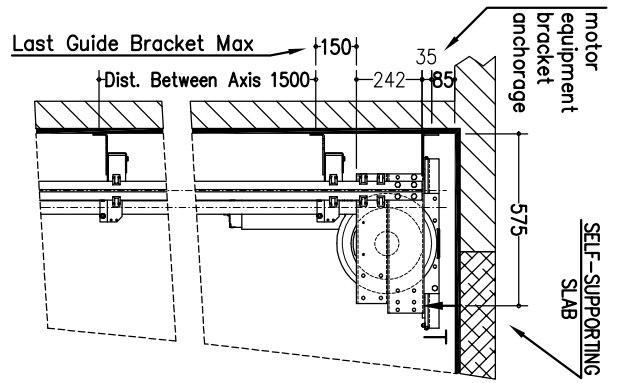
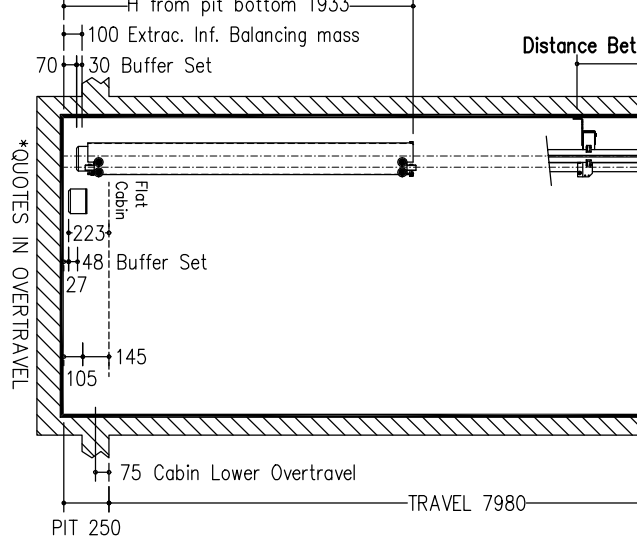
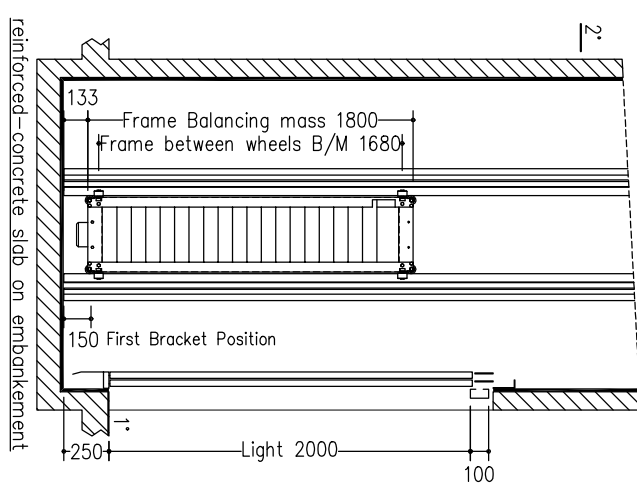
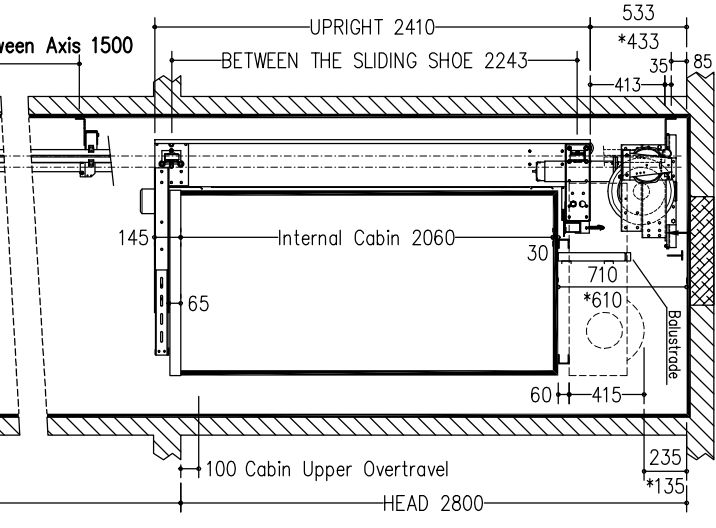


T  
MOTOR EQUIPMENT  
FILING ENCLOSURE

SECTION B-B  
VENTILATION ON THE TOP OF THE SHAFT COMPLYING TO THE EXISTING NORMATIVES

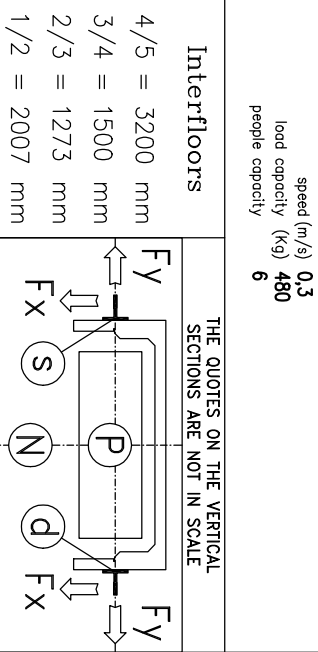


SECTION A-A  
VENTILATION ON THE TOP OF THE SHAFT COMPLYING TO THE EXISTING NORMATIVES



Max loads	blancing mass P arcode N motor equipment T	(N) (N) (N)	31714 43046 11096
Thrust during normal operation	Fx Fy s D	(N) (N) (N) (N)	1224 523 1891 1891
Thrust of safety gear device intervention	Fx Fy s D	(N) (N) (N) (N)	3478 871 13437 13437
reference normatives	pr EN81.21 maneuver		universide
voltage of the battery charger	(V)		220V
batteries	FIAMM-GS FG22703 12V 27Ah		
reduction gear	110 PAM 90 1/49 STM		
motor	DAQU EE302 c.c. 40 V		
block brake	12 N.m - 24 V		
arcode	930-480kg-m80x960-H2410		
arcode mass (kg)	175		
balancing (%)	40		
balancing mass (kg)	788		
components of the bolanc suspension cables	n° 16 pani e n° 119 piastre		
length (mm)	12050		
minimum breaking load (N)	42100		
bolanc. mass shock absorbers	ETN 125 x 100		
cabin shock absorbers	ETN 125 x 100		
cabin guides	GF770 x 10910 mm - staffe n° 9		
balancing mass guides	RF50 x 10910 mm		
speed (m/s)	0,3		
load capacity (kg)	480		
people capacity	6		

NOTES FOR THE CUSTOMER  
THE HORIZONTAL AND VERTICAL LOAD BEARING STRUCTURES MUST BE ABLE TO SUSTAIN THE LOADS INDICATED. THE HOISTWAY SHAFT MUST BE VENTILATED ACCORDING TO THE EXISTING NORMATIVES AND CONSTRUCTED IN ORDER THAT ALL EQUIPMENTS INSIDE IT ARE PROTECTED FROM DUST, UNWEATHER VIBRATIONS AND HUMIDITY. THE DIMENSIONS OF THE ELEVATOR SHAFT MUST BE COMPATIBLE WITH AN ELEVATOR OF THE SAME TYPE. THE DIMENSIONS OF THE HOISTWAY MUST BE COMPATIBLE WITH THE EXISTING NORMATIVES. THE CUSTOMER HAS TO WATERPROOF THE PIT AFTER THE DRING OF (HOOXKOPDOD). THE EQUIPMENT IN THE PIT BOTTOM. THE PROJECT IS COMPILED IN ACCORDANCE TO THE EXISTING NORMATIVES.  
FOR APPROVAL OF EVERYTHING CONCERNING THE MASONRY PARTS OF THE SHAFT.  
DATE SIGN



Shaft typology:	MASONRY
Stops:	5
Doors:	5
Sheet:	2/2
Sheet dimension:	A3
Scale:	1/30
Drawing by:	Daniilo Tomei
first draft:	28/08/2007
final drawing:	
MODEL:	SUPERMEC

