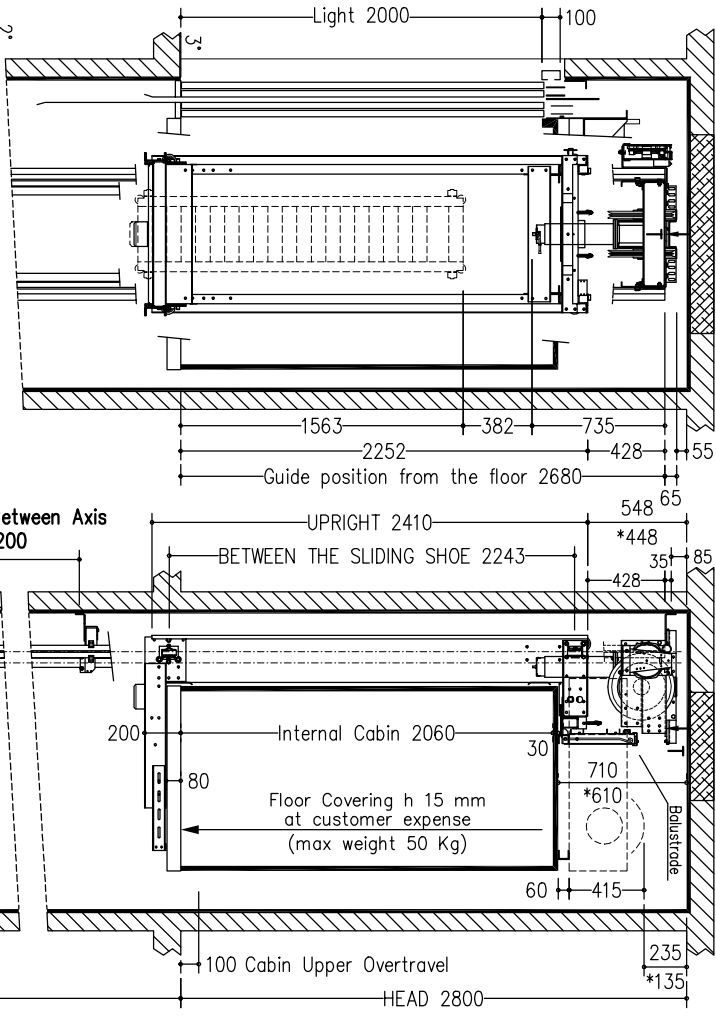


- NOT STANDARD:**
- CABIN PREPARED FOR FLOOR COVERING AT CUSTOMER EXPENSE (FLOOR THICKNESS 15 mm)
- STANDARD ACCESSORIES:**
- REMOVABLE ENABLING KEY FOR THE CABIN BUTTON PANEL
 - REMOVABLE ENABLING KEY FOR THE FLOOR BUTTON PANEL
 - PUSH BUTTON PANEL VERTICAL
- NOT STANDARD ACCESSORIES:**
- FULL HEIGHT INFRA-RED CURTAIN

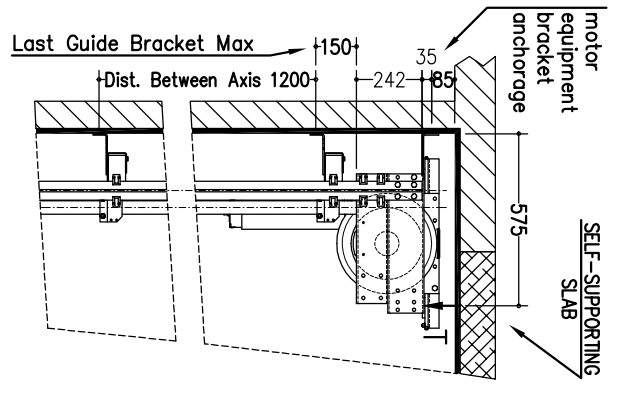
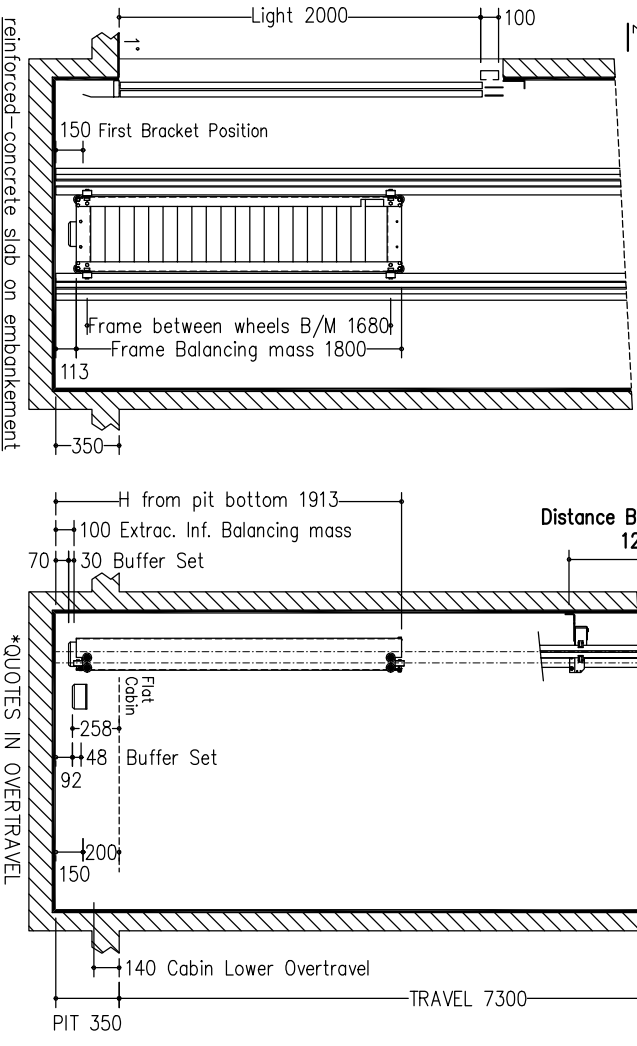
	cabin	cabin
cabin mass and operators (Kg)	413	ATLANTIS - SM
panels	Lamiera zincata	
finishings	INOX Scotch Brite	
floor	ESCLUSO DALLA FORNITURA	
push button panel	Verticale a n° 6 fori + GONG	
roof	Faretti INOX Scotch Brite	
cabin doors colour	Lamiera zincata (oper. CMM-E-2006)	
landing doors colour	Lamiera zincata	
frame landing doors colour	Lamiera zincata	
electrical s. cabinet colour	Similinox FI2PPS	

T
MOTOR EQUIPMENT
FLOOR MASSIVE

SECTION B-B
SELF-SUPPORTING
VENTILATION ON THE TOP OF THE SHAFT COMPLYING TO THE EXISTING NORMATIVES



SECTION A-A
SELF-SUPPORTING
SLAB



Max loads	blancing mass P (N) 33189
	arcade N (N) 42730
	motor equipment T (N) 11270
Thrust during normal operation	Fx (N) 1336
	Fy (N) -793
	s (N) 1790
	D (N) 1790
Thrust of safety gear device intervention	Fx (N) 3655
	Fy (N) -1321
	s (N) 13257
	D (N) 13257
reference normatives	pr EN81.21 (2006)
reference normatives	universide
voltage of the battery charger	(V) 220V
batteries	FIAMM-GS FG22703 12V 27Ah
reduction gear	110 PAM 90 1/49 STM
motor	DAGU EE302 c.c. 40 V
block brake	12 N/m - 24 V
arcade	930-630kg-m120x1160-H2410
arcade mass (kg)	175
balancing (%)	49
balancing mass (kg)	826
components of the balanc. mass suspension cables	n° 12 pani e n° 151 piastre
length (mm)	ALOTO 9x6
minimum breaking load (N)	11500
minimum breaking load (N)	42100
balanc. mass shock absorbers	ETN 125 x 80
cabin shock absorbers	ETN 125 x 80
cabin guides	GF770 x 10330 mm - staffe n° 10
balancing mass guides	RF50 x 10330 mm
speed (m/s)	0,3
load capacity (kg)	480
people capacity	6

NOTES FOR THE CUSTOMER
THE HORIZONTAL AND VERTICAL LOAD BEARING STRUCTURES MUST BE ABLE TO SUSTAIN THE LOADS INDICATED. THE HOSTWAY SHAFT MUST BE VENTILATED ACCORDING TO THE EXISTING NORMATIVES AND CONSTRUCTED IN ORDER THAT ALL EQUIPMENTS INSIDE IT ARE PROTECTED FROM DUST, UNHEALTHY VAPOR AND HUMIDITY. THE DIMENSIONS OF THE EXISTING SHAFT MUST BE COMPARED WITH AN EXISTING SHAFT OF THE SAME TYPE. IN CASE OF DISCREPANCY, THE CUSTOMER HAS TO WATERPROOF THE PIT AFTER THE DRING OF (HOOXODODOD). THE CUSTOMER HAS TO WATERPROOF THE PIT AFTER THE DRING OF THE EQUIPMENT IN THE PIT BOTTOM. THE PROJECT IS COMPILED IN ACCORDANCE TO THE EXISTING NORMATIVES.

FOR APPROVAL OF EVERYTHING CONCERNING THE MASONRY PARTS OF THE SHAFT.

DATE _____ SIGN _____

Interfloors	2/3 = 3650 mm
	1/2 = 3650 mm

