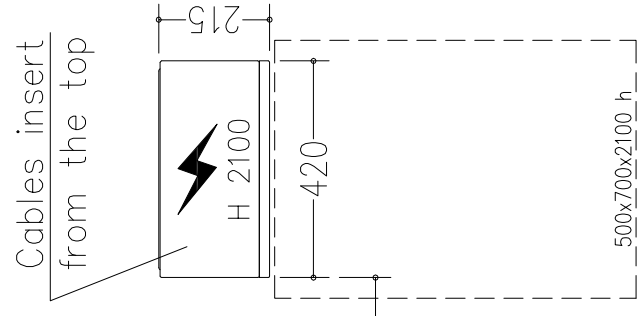
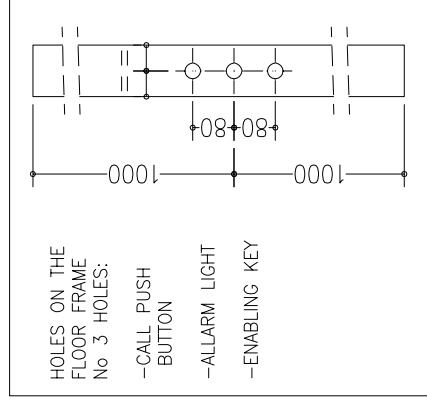
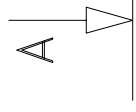
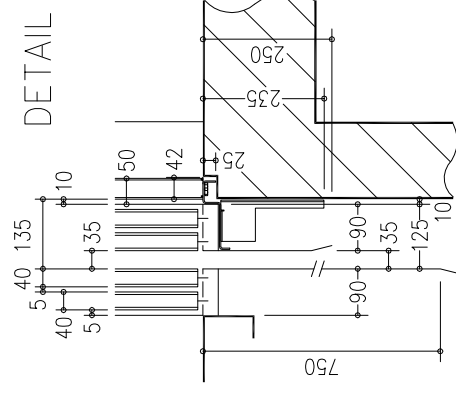


Handling switchboard at floor 1, protected against water leaks and inside of the building.

Provide an inspectionable canalization to allow the way to the piping and to the electrical installation.



**THRESHOLD
DETAIL**



NOT STANDARD:

- DOUBLES BATTERIES

STANDARD ACCESSORIES:

- REMOVABLE ENABLING KEY FOR THE CABIN BUTTON PANEL
- REMOVABLE ENABLING KEY FOR THE FLOOR BUTTON PANEL
- PUSH BUTTON PANEL VERTICAL

NOT STANDARD ACCESSORIES:

- FULL HEIGHT INFRA-RED CURTAIN
- AUTO DIALER EXCLUDED

ATLANTIS - SM

- cabin mass and operators (Kg) 421
- panels INOX Scotch Brite
- finishings INOX Scotch Brite
- floor Gamma a Bolle - Nera
- push button panel Verticale a n° 8 fori
- roof Faretti Bianco A1
- cabin doors colour INOX Scotch Brite (oper. CMM-E.2006)
- landing doors colour INOX Scotch Brite
- frame landing doors colour INOX Scotch Brite
- electrical s. cabinet colour Similinox F12PPS

Shaft typology: MASONRY		Sheet	Scale	first draft	FINAL DESIGN DRAWINGS
4	Doors: 4	1/2	A3	05/07/2010	final drawing
Stops: 4		1/15		D. Tomei	17/01/2011
Modifications					
d.					
c.					
b nuovo "Final Design Drawings": corsa da 10050 a 9450.					
a aumentato del piano "4": Q.E. era distante 7000; ciellino era Universal Inox BA; corsa era 5400.					
CUSTOMER		MODEL			
LIFT SHOP		SUPERMEC			
Place of installation					



