

- NOT STANDARD:**
- CABIN PREPARED FOR FLOOR COVERING AT CUSTOMER EXPENSE (FLOOR THICKNESS 15 mm)
- STANDARD ACCESSORIES:**
- REMOVABLE ENABLING KEY FOR THE CABIN BUTTON PANEL
 - REMOVABLE ENABLING KEY FOR THE FLOOR BUTTON PANEL
 - DISPLAY ON THE LENDINGS
 - CABIN OUTSIDE COVERING ON SIDE "C" POLISHED STAINLESS STEEL
 - PUSH BUTTON PANEL VERTICAL
- NOT STANDARD ACCESSORIES:**
- FULL HEIGHT INFRA-RED CURTAIN
 - AUTO DIALER EXCLUDED
 - REMOTE CONTROL CALL & SEND

cabin mass and operators	ATLANTIS - SM 452
panels	Similinox F12PPS
finishings	INOX BA (Lucido)
floor	ESCLUSO DALLA FORNITURA
push button panel	Verticale a n° 7 fori INOX BA (Lucido)
roof	Disegno Dama INOX BA (Lucido)
cabin doors colour	INOX BA (Lucido) con fin. panor. trasp. (oper. CMM-E.2006)
landing doors colour	INOX BA (Lucido) con finestr. panoramica trasparente
frame landing doors colour	INOX BA (Lucido)
electrical s. cabinet colour	Similinox F12PPS

Shaft typology: MASONRY		Scale		Sheet		Sheet dimension		first draft		FINAL DESIGN DRAWINGS	
Stops:	3	Doors:	1/2	Scale	1/15	Sheet	A3	first draft	02/02/2010	final drawing	07/06/2011
Modifications	d.										
	c.										
	b.	Variante "Final Design Drawings": portata impianto da 480 kg a 630 kg; fossa da 265 a 365.									
	a.	bottom. cabina era orizzont. con parete 1/2 specchio; pannelli, rivest. est. e ante erano inox S.B.; aggiunto telecomando; ciellino era a faretti.									
PR											
											SUPERMEC



Provide an inspectionable canalization to allow the way to the piping and to the electrical installation.

Handling switchboard at floor 1, protected against water leaks and inside of the building.

Cables insert from the top



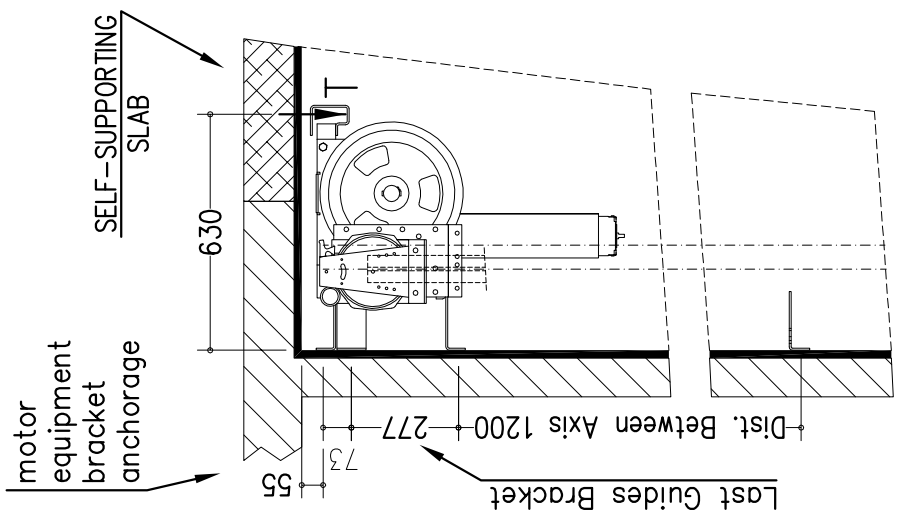
H 2100

Side "B"

Side "C"

Side "A"

<u>Max loads</u>	blancing mass P (N) 37568 arcade N (N) 49951 motor equipment T (N) 13040
<u>Thrust during normal operation</u>	Fx (N) 1425 Fy (N) 1089 s (N) 1542 d (N) 1542
<u>Thrust of safety gear device intervention</u>	Fx (N) 4043 Fy (N) 1814 s (N) 14814 d (N) 14814
reference normative	pr EN81.21 (2006) universale
voltage of the battery charger	(V) 220V batteries 12V 27Ah
reduction gear	110 PAM 90 1/49
motor	TTN209D 42Vcc 2070W 66A 1100rpm
block brake	12 N/m – 24 V
arcade	930–630kg–m120x960–H2410
arcade mass (Kg)	175
balancing (%)	50
balancing mass (Kg)	942
components of the balanc. mass	n° 248 piastre
suspension cables	9x6 (c.r. 177 daN)
length (mm)	10000
minimum breaking load (N)	47400
balanc. mass shock absorbers	ETN 125 x 80
cabin shock absorbers	ETN 125 x 80
cabin guides	T70x70x9 x 8895 mm – staffe n° 9
balancing mass guides	T50/A x 8695 mm
speed (m/s)	0,5
load capacity (Kg)	630
people capacity	8

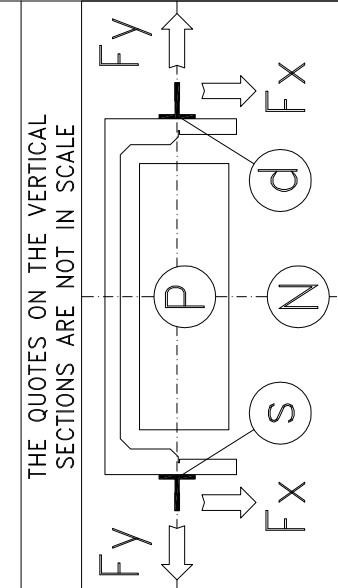


NOTES FOR THE CUSTOMER

THE HORIZONTAL AND VERTICAL LOAD BEARING STRUCTURES MUST BE ABLE TO SUSTAIN THE LOADS INDICATED. THE HOISTWAY SHAFT MUST BE VENTILATED ACCORDING TO THE EXISTING NORMATIVES AND CONSTRUCTED IN ORDER THAT ALL EQUIPMENTS INSIDE IT ARE PROTECTED FROM DUST, UNHEALTHY VAPOUR AND HUMIDITY. THE DIMENSIONS OF THE LEVATOR SHAFT MUST BE GUARANTEED WITH AN ALLOWANCES OF 1 CM AND THE WALLS MUST BE PERFECTLY PLUMBED. IN THE CASE IN WHICH THE PIT IS MORE THAN 500 MM BUILT-IN STEPS ARE NECESSARY (140X100X400). THE CUSTOMER HAS TO WATERPROOF THE PIT AFTER THE FIXING OF THE EQUIPMENT IN THE PIT BOTTOM. THE PROJECT IS COMPILED IN ACCORDANCE TO THE EXISTING NORMATIVES.

FOR APPROVAL OF EVERYTHING CONCERNING THE MASONRY PARTS OF THE SHAFT:

DATE _____ SIGN _____

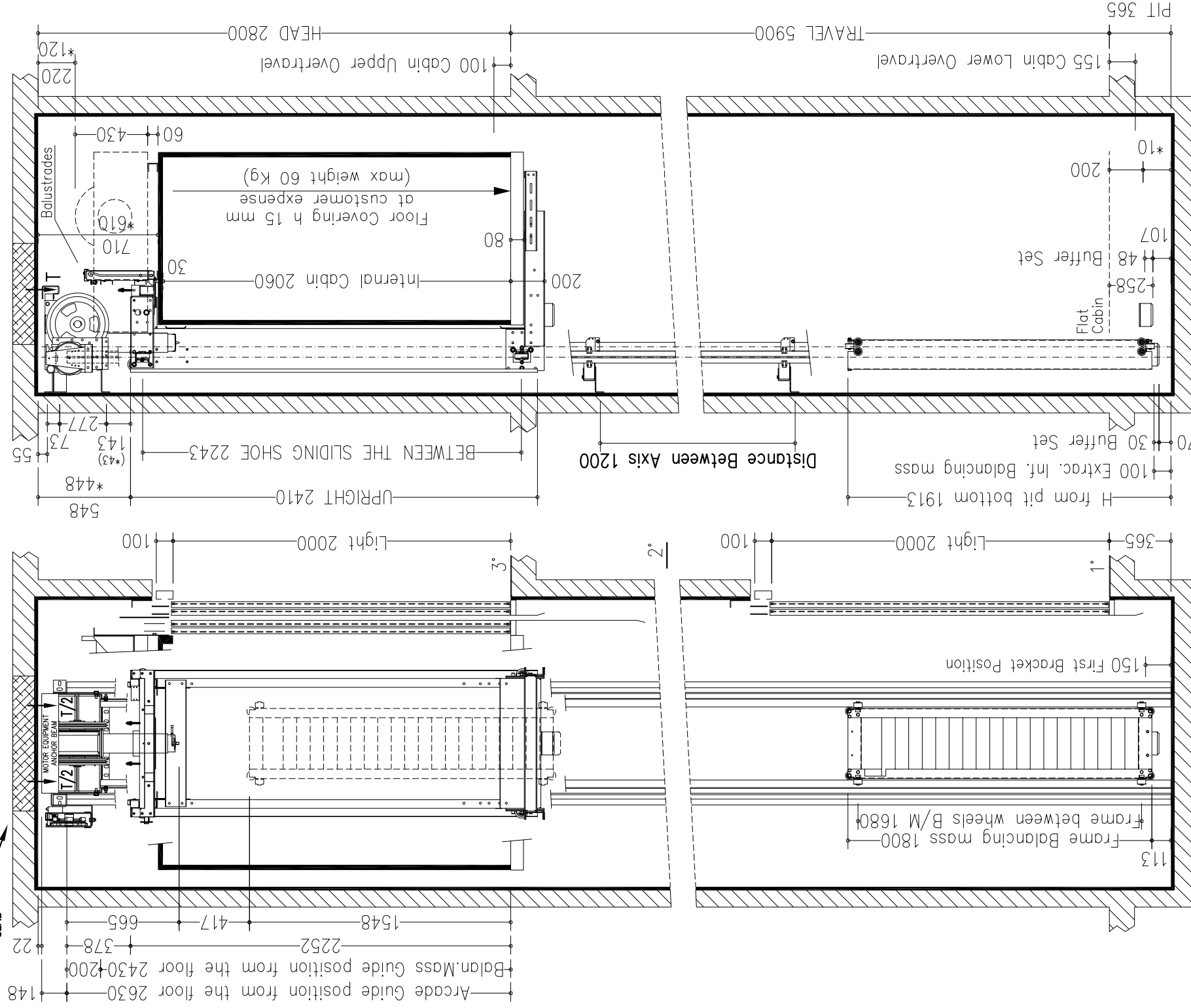


Interfloors

2/3 = 3250 mm
1/2 = 2650 mm

Shaft typology: MASONRY		Sheet	2/2	Scale	1/30	D. Tomei	first draft	02/02/2010	D. Tomei	final drawing	07/06/2011
Stops:	3	Doors:	3	Sheet	2/2	Scale	1/30	D. Tomei	final drawing	07/06/2011	
Modifications	d.										
	c.										
	b.	Variante "Final Design Drawings": portata impianto da 480 kg a 630 kg; fossa da 265 a 365.									
	a.	botton. cabina era orizzont. con parete 1/2 specchio; pannelli, rivest.est. e ante erano inox S.B.; aggiuntio telecomando; ciellino era a faretti.									
											MODEL
											SUPERMEC

SECTION A-A
VENTILATION ON THE TOP OF THE SHAFT COMPLYING TO THE EXISTING NORMATIVES



reinforced-concrete slab on embankment



CUSTOMER
LIFT SHOP