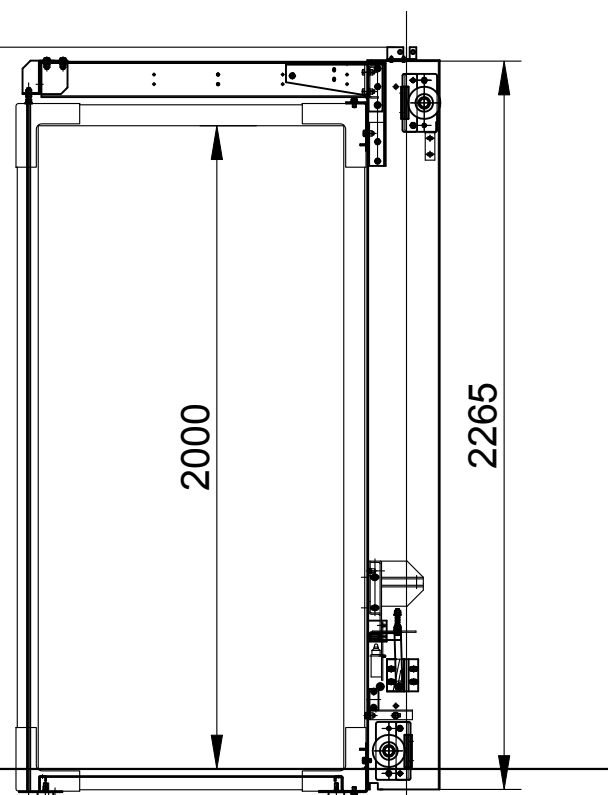


Head 2700

H2 2900

H1 2800

Travel 5700

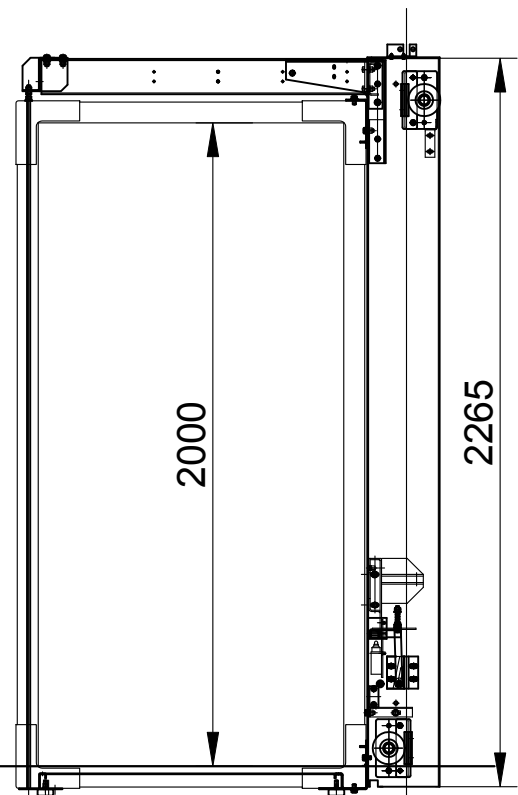


Hydraulic Unit	3 F 3 S 3 D			1	240V,50HZ 30A
	Type	T3010EN			
	Volume	HL			
	Flux	35	l/min		
	Power	2.9	KW		
	Joint		3/4"		
Recycle pipe	D = 8 mm, L = 6 m			1	

80	x	5	Ram (Silver)	Type:	One stage teles copic	1
			Diameter:	φ = 80	mm	
			Travel:	= 3.1	m	
			Port:	3/4"		

N46#	Hydraulic oil	75	L
Supplied Locally			

Machine cabinet	Level 1		
Interface size	3/4"	Oil pipe length outside of shaft	2 m
From shaft side	Left	Cable length outside of shaft	2 m
Size	720 wide	480 deep	1400 high
Load	P1:30KN	P3:20KN	P4: 20kN F1:2498N

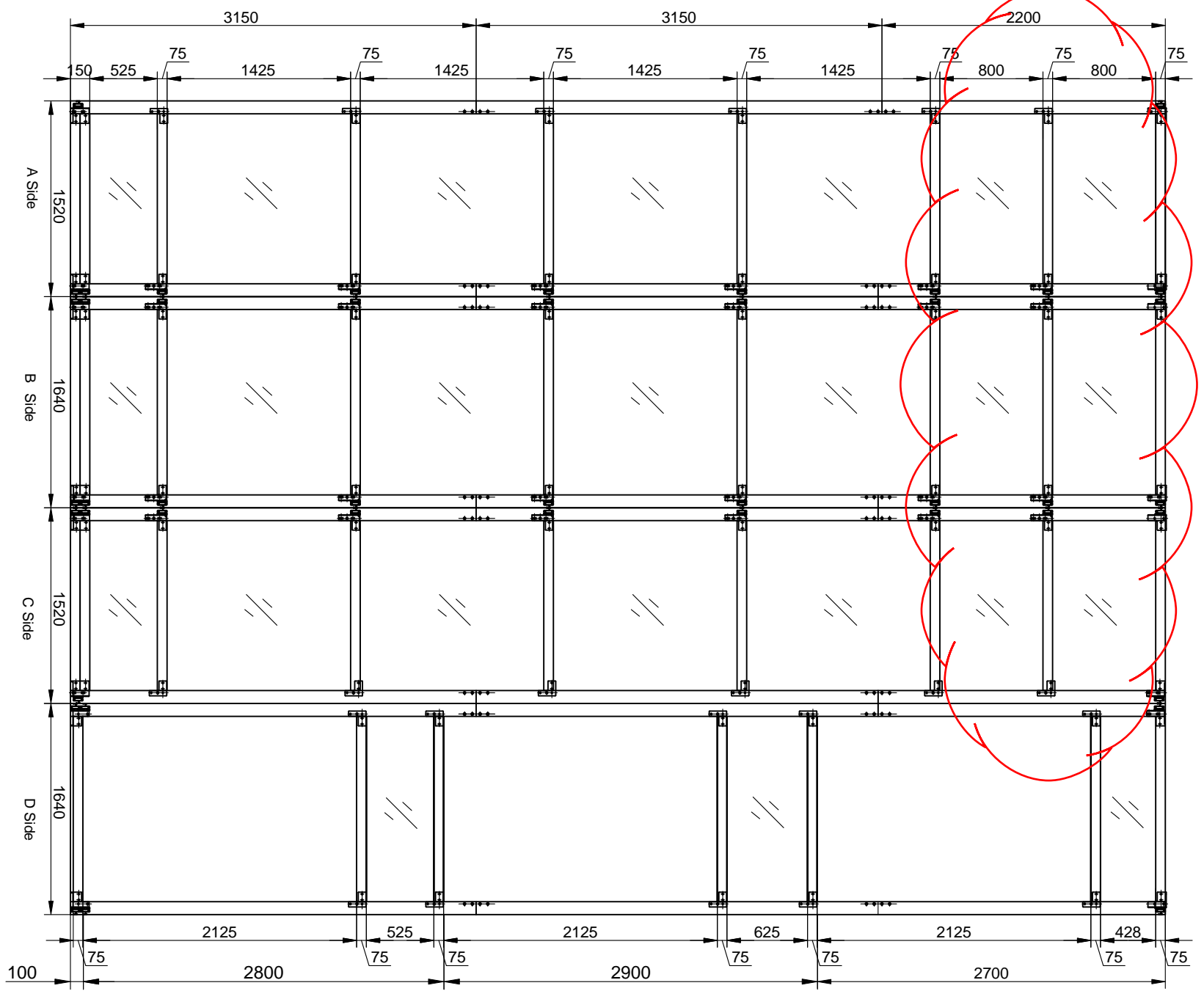


Project	82182-1
Version	2
Contract No.	P29044DY12484
Final Drawing	
Design	yaogang
Check	
Approve	
Date	2014.7.15

320kg hydraulic freedomlift

LIFTSHOP

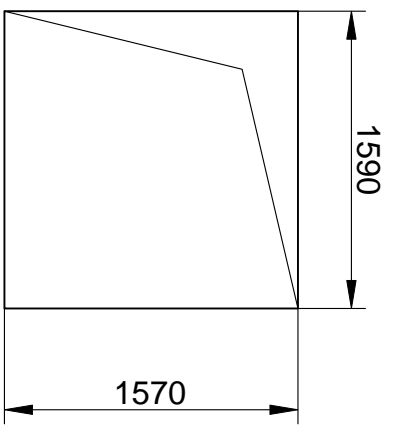
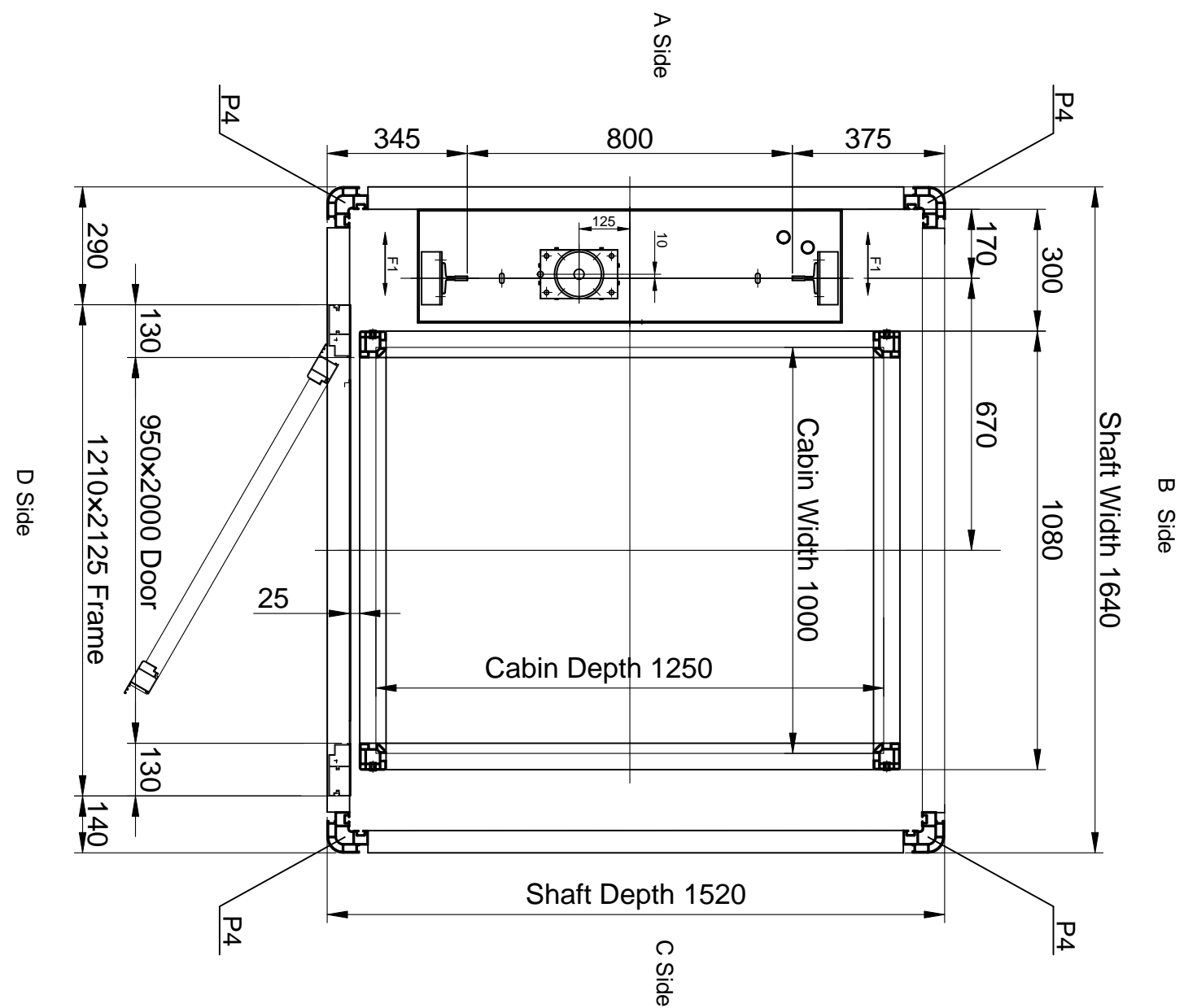
life with style



Load Capacity	320kg	Ceiling	DBD-20 Polished silver
Speed	0.25m/s	Floor	DBF-01
		Cop	DBK-02 Polished silver

Shaft Frame	DBC-09	Car Frame	DBC-09
Front Wall	Glass - DBM-01	Left Wall	DBB-16
Left Wall	Glass - DBM-01	Right Wall	DBM-01
Right Wall	Glass - DBM-01	Rear Wall	DBM-01
Rear Wall	Glass - DBM-01		

Landing floor	W	H	Type	Hinge	Landing Door Decoration
1st floor	P 950	2000	Standard	Left Axis	Frame DBC-09 Panel DBM-01 Handle DBL-20 Close DBQ-02
2nd floor	P 950	2000	Standard	Left Axis	Frame DBC-09 Panel DBM-01 Handle DBL-20 Close DBQ-02
3rd floor	P 950	2000	Standard	Left Axis	Frame DBC-09 Panel DBM-01 Handle DBL-20 Close DBQ-02



Project	82182-1
Version	2
Contract No.	P29044DY12484
Final Drawing	
Design Check	Yaogang
Approve	
Date	2014.7.15

320kg hydraulic freedomlift

