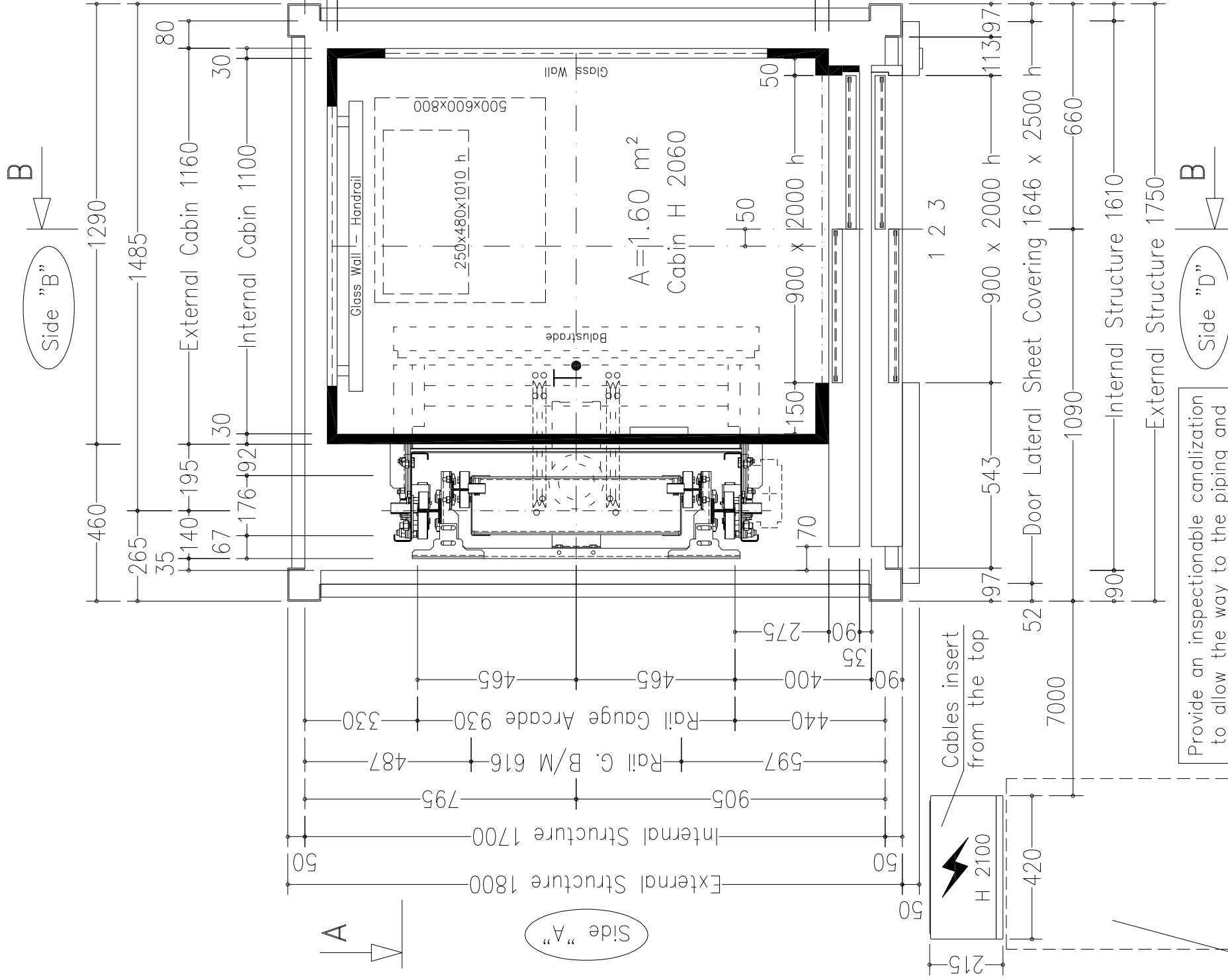


**CHARACTERISTICS OF STRUCTURE**

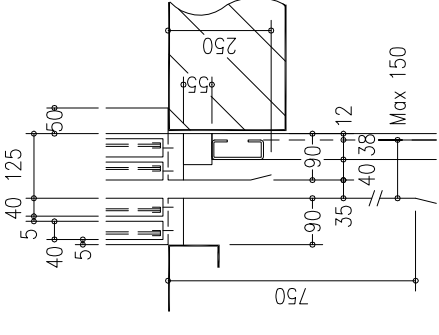
- Metallic structure for indoor with flat covering Polished S.S.
- Structure from pit bottom.
- Structure sheet covering: Polished Stainless Steel
- On sides "B", "C", "D" Panoramic glass covering: Transparent
- On side "A" no cladding.
- Floor Covering: sheet Polished Stainless Steel.
- Distance Between Axis 1,25 m
- guides length 8580 mm - Guides cut down size 2500 mm

Structure anchorage at customer expense, as per supplier prescribed modes:

- Headroom with min. 3 vertical legs.
- Along travel min 3 vertical legs with a pitch of max 3500 mm



**THRESHOLD DETAIL**



**STANDARD ACCESSORIES:**

- REMOVABLE ENABLING KEY FOR THE CABIN BUTTON PANEL
- REMOVABLE ENABLING KEY FOR THE FLOOR BUTTON PANEL
- DISPLAY ON THE LENDINGS
- CABIN OUTSIDE COVERING ON SIDE "B", "C".
- POLISHED STAINLESS STEEL
- PUSH BUTTON PANEL VERTICAL

**NOTE:**

-LANDIN DOORS WITHOUT FRAMES (ONLY LATERAL DOOR OF STRUCTURE)

cabin mass and operators panels	TIPO NOVA
finishings	INOX BA (Lucido)
floor	INOX BA (Lucido)
push button panel	Rocksolid 677
roof	Verticale a n° 7 fori
cabin doors colour	Faretti INOX BA (Lucido)
landing doors colour	INOX BA (Lucido) con fin. pan. fumè (oper. CMM-E.2006)
electrical s. cabinet colour	INOX BA (Lucido) con finestr. panoramica fumè
	INOX BA (Lucido)

**METALLIC STRUCTURE INCLUDED**

Sheet	1/2	Scale	1/15	first draft	09/10/2009	D. Tomei	final drawing	26/02/2010
Stops:	3	Doors:	3					
Modifications	d.							
	c.							
	b.							26/02/2010
	a.							26/02/2010
								MODEL
								<b>SUPERMEC</b>



Handling switchboard at floor 1, protected against water leaks and inside of the building.

**Max loads**

blancing mass P	(N)	34774
arcade N	(N)	44232
motor equipment T	(N)	11763

**Thrust during normal operation**

Fx	(N)	1242
Fy	(N)	-925
s	(N)	1487
d	(N)	1487

**Thrust of safety gear device intervention**

Fx	(N)	3548
Fy	(N)	-1542
s	(N)	13330
d	(N)	13330

reference normatives  
maneuver  
pr EN81.21 (2006)  
universale

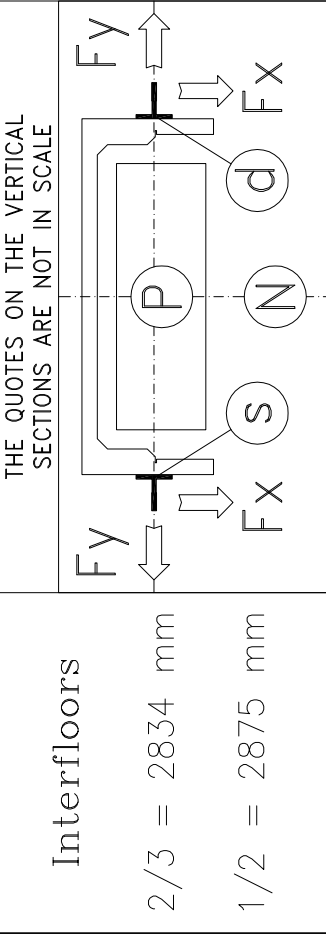
voltage of the battery charger  
batteries  
(V) 220V  
FIAMM-GS FG22703 12V 27Ah

reduction gear  
motor  
block brake  
110 PAM 90 1/49 STM  
DAGU EE302 c.c. 40 V  
12 N\m - 24 V

arcade  
arcade mass (Kg) 175  
balancing (%) 50  
balancing mass (Kg) 871  
n° 10 panni e n° 174 piastre  
suspension cables ALIOTO 9x6  
length (mm) 9700  
minimum breaking load (N) 42100

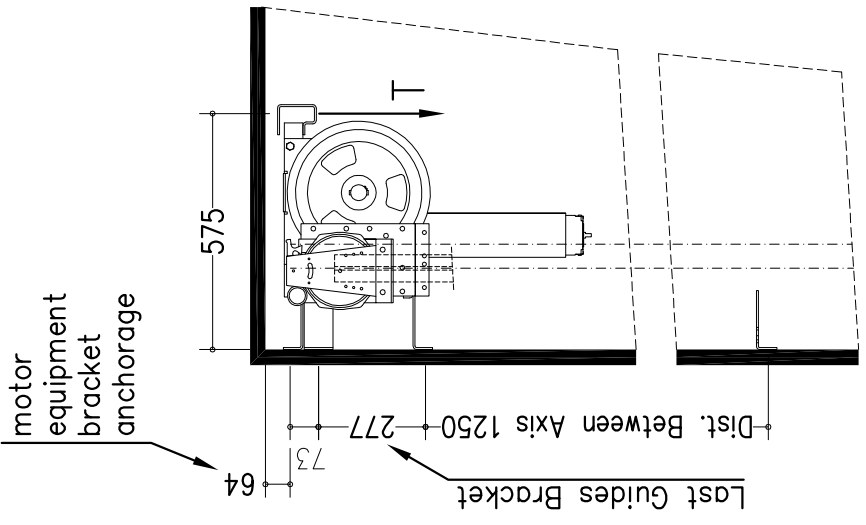
balanc. mass shock absorbers  
cabin shock absorbers  
cabin guides  
balancing mass guides  
ETN 125 x 80  
ETN 125 x 80  
GF770 x 8580 mm - staffe n° 9  
RF50 x 8380 mm

speed (m/s) 0,3  
load capacity (Kg) 480  
people capacity 6



**Shaft typology: METALLIC STRUCTURE INCLUDED**

Sheet dimension	A3	Scale	1/30	D. Tomei	first draft	09/10/2009	D. Tomei	final drawing	26/02/2010
Stops:	3	Doors:	3	Sheet	2/2				
Modifications	d.	c.							
a	pavimento cab. era escluso; le porte panoramiche erano trasparenti; la corsa era 6200.								
b	impianto specciato; struttura da vernic. RAL a inox con tamp. da vetro fumè a trasparente.								
<b>SUPERMEC</b>									



**NOTES FOR THE CUSTOMER**

THE HORIZONTAL AND VERTICAL LOAD BEARING STRUCTURES MUST BE ABLE TO SUSTAIN THE LOADS INDICATED. THE HOISTWAY SHAFT MUST BE VENTILATED ACCORDING TO THE EXISTING NORMATIVES AND CONSTRUCTED IN ORDER THAT ALL EQUIPMENTS INSIDE IT ARE PROTECTED FROM DUST, UNHEALTHY VAPOUR AND HUMIDITY. THE DIMENSIONS OF THE LEVATOR SHAFT MUST BE GUARANTEED WITH AN ALLOWANCES OF 1 CM AND THE WALLS MUST BE PERFECTLY PLUMBED. IN THE CASE IN WHICH THE PIT IS MORE THAN 500 MM BUILT-IN STEPS ARE NECESSARY (140X100X400). THE CUSTOMER HAS TO WATERPROOF THE PIT AFTER THE FIXING OF THE EQUIPMENT IN THE PIT BOTTOM. THE PROJECT IS COMPILED IN ACCORDANCE TO THE EXISTING NORMATIVES.

FOR APPROVAL OF EVERYTHING CONCERNING THE MASONRY PARTS OF THE SHAFT.

DATE \_\_\_\_\_ SIGN \_\_\_\_\_

Shaft typology: METALLIC STRUCTURE INCLUDED

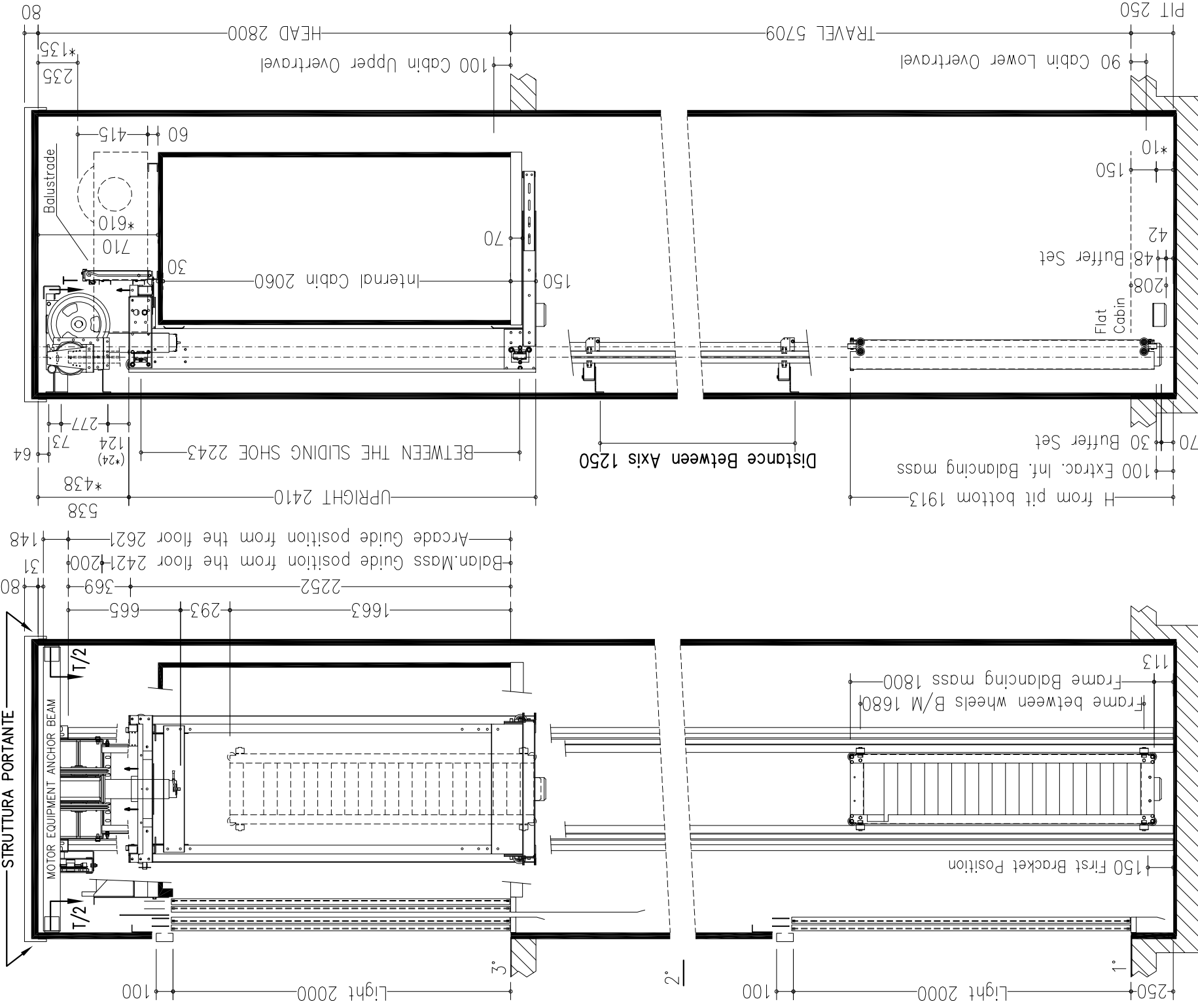
Sheet dimension: A3, Scale: 1/30, D. Tomei

Stops: 3, Doors: 3, Sheet: 2/2

**Shaft typology: METALLIC STRUCTURE INCLUDED**

Sheet dimension	A3	Scale	1/30	D. Tomei	first draft	09/10/2009	D. Tomei	final drawing	26/02/2010
Stops:	3	Doors:	3	Sheet	2/2				
Modifications	d.	c.							
a	pavimento cab. era escluso; le porte panoramiche erano trasparenti; la corsa era 6200.								
b	impianto specciato; struttura da vernic. RAL a inox con tamp. da vetro fumè a trasparente.								
<b>SUPERMEC</b>									

**SECTION A-A**  
VENTILATION ON THE TOP OF THE SHAFT COMPLYING TO THE EXISTING NORMATIVES



reinforced-concrete slab on embankment