

FLOOR DOOR

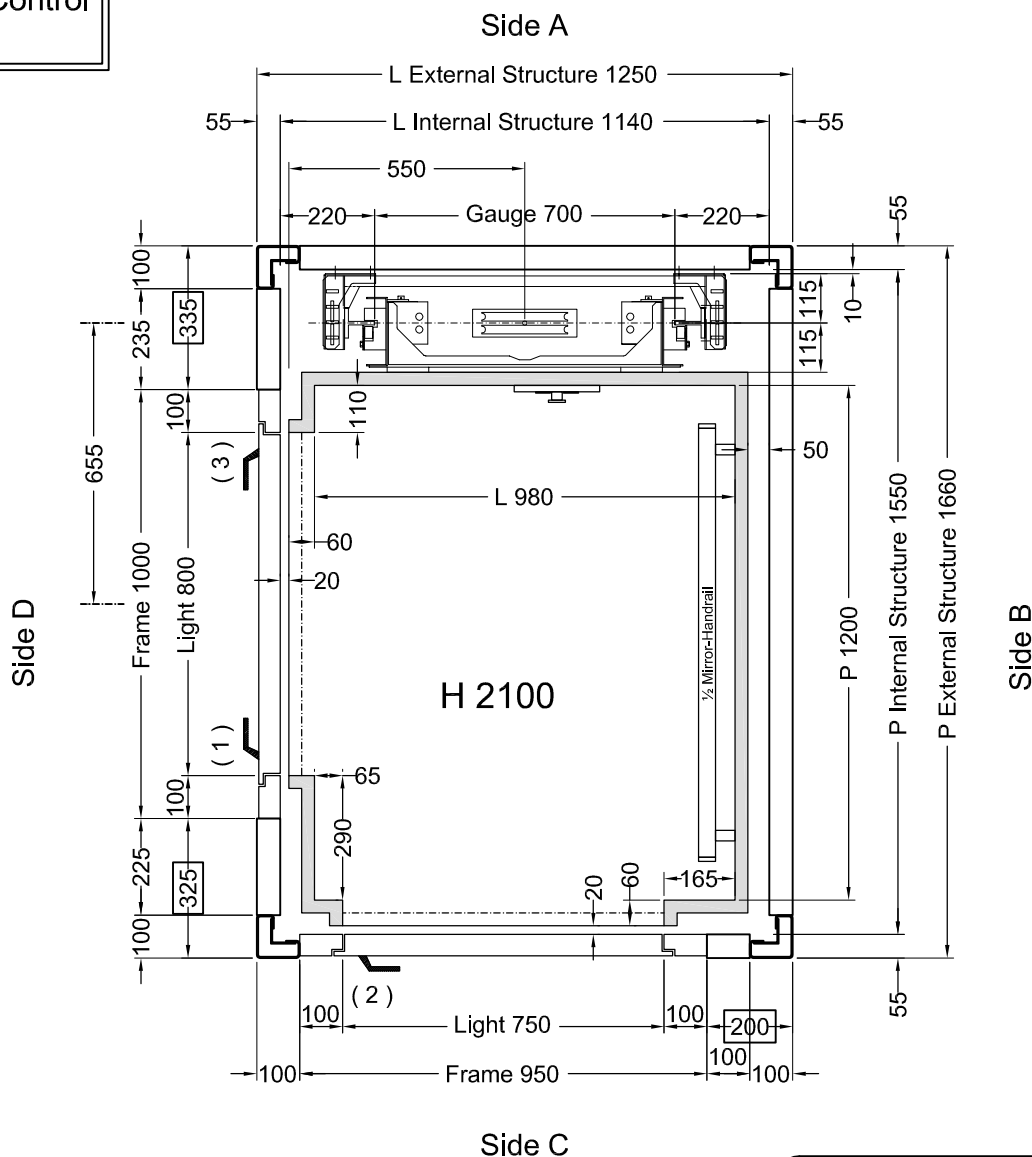
Side B	Side C	Side D	VERSION	H LIGHT	H FRAME	WINDOW	GLASS	ACCESSORIES	C1	C2	PM	PE
		1	Standard RAL 9010	2000	2100	Absent				X		
	2		Standard RAL 9010	2000	2100	Absent				X		
		3	Standard RAL 9016	2000	2100	Absent				X		

C1 = Enabling key for the floor button pad (single insertion) C2 = Enabling key for the floor button pad (double insertion) PM = Button pad on the wall PE = Outside lock and button pad

Shaft V315B (Struttura V315B)

ENVIRONMENT	VERSION	CLADDING	START	ROOF	ANCHORAGE
Outside	Galvanized	Sheet Cladding	Pit bottom	For Outside	Anchorage to care of the Customer. Ancoraggio a cura del Committente.
Esterno	Zincata	Lamiera	Fondo Fossa	Per esterno	



Automatic Control
2008



Stops: 3 - Doors: 3

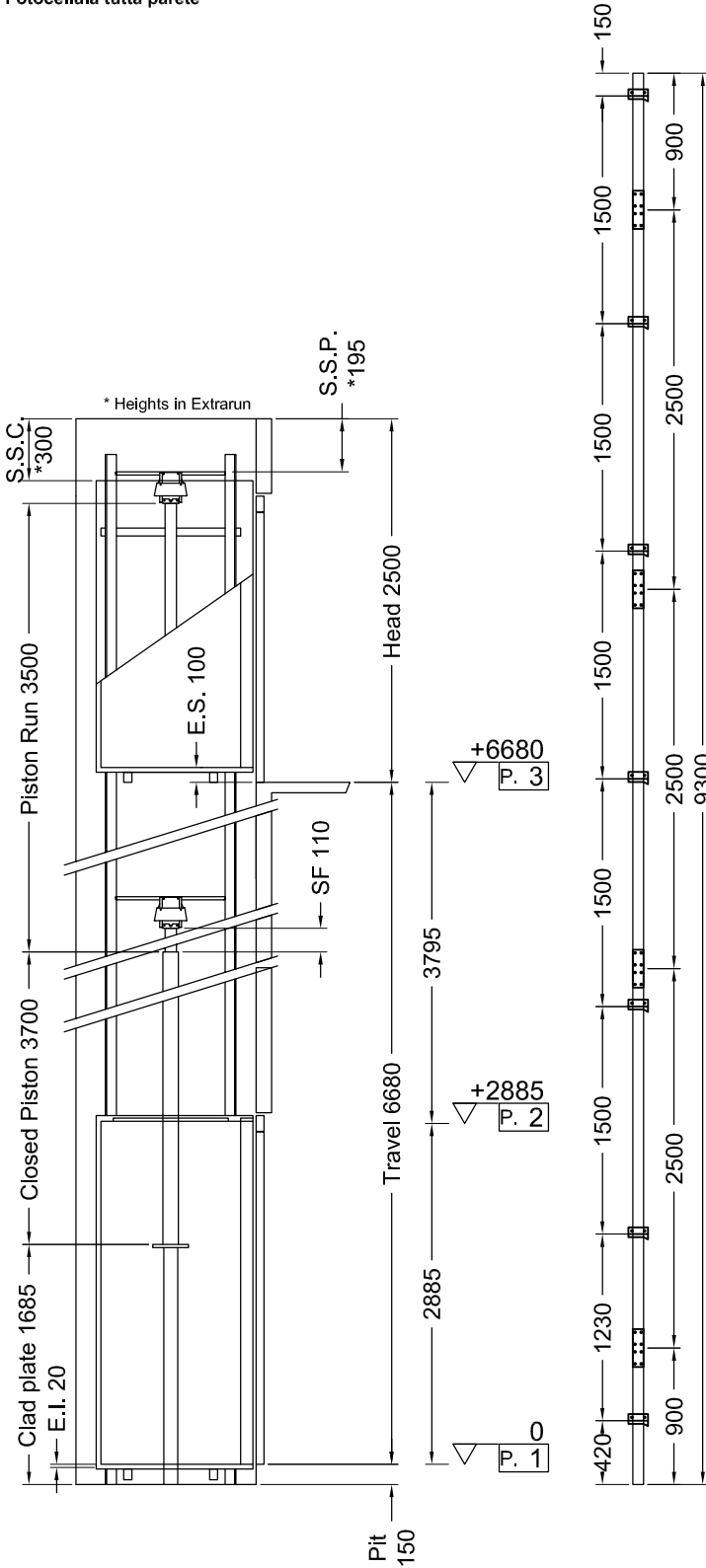
Shaft on **Shaft V315B (Struttura V315B)**

Feasibility n° 1423 - Structure Roof

VERSIONS	Description	Designer	Date	Final Design Drawings	
	Correzione: Porta P.3 RAL 9016.	L.Del Bianco	23/12/2010	 SHEET 1/4 SHEET DIMENS. A3 SCALE 1:12.5	
	Illuminazione DAMA; Porte cieche.	L.Del Bianco	20/12/2010		
Corsa.	L.Del Bianco	06/12/2010			
	Final Design Drawings L.Del Bianco		1° STESURA 19/10/10		
		CAPACITY 350 Kg	AREA m ² 1,18	CAPACITY	

ACCESSORI:

- Chiave abilitazione pulsantiera cabina a doppia estrazione
- Guide in barre da 2,5 m
- Pompa a mano
- Pressostato con segnalazione di sovraccarico
- Doppia velocità
- Manovra Automatica 2008
- Ritorno piano basso con tempo regolabile
- Arcata rinforzata
- Maniglie CASPIM
- Fotocellula tutta parete



Indirect Installation	Speed 0,3 m/s	23/12/10 16.27 (V.2303B)
-----------------------	---------------	--------------------------

THRUST DURING NORMAL OPERATION			THRUST OF SAFETY DEVICE INTERVENT.		
P	(N)	9810	P	(N)	619
N	(N)	824	N	(N)	6745
F1	(N)	1577	F1	(N)	2629
F2	(N)	283	F2	(N)	472

SPACES		PRESSURES		
E.I.	Extrarun below cabin (mm)	20	Max static pressure (bar)	32,68
E.S.	Extrarun above cabin (mm)	100	Min static pressure (bar)	14,84
SF.	Piston extraction (mm)	110	Overpressure limit (bar)	45,76
S.S.P.	Piston/head (mm)	195	Residual pressure (bar)	1,61
S.S.C.	Cabin/head (mm)	300		

HYDRAULIC UNIT		MECHANICAL PARTS	
Central unit	START 96SLE	Runners	T70-2A
Capacity (l/min)	35	Brackets	(Nr) 7
Motor (V)	MF230V	Cables	9 mm 6-(1+9+9)
Power (Kw)	3	Cables lenght (mm) 2 x	11700
Piston	START Home (ø) 70x5x3500	Min actual breaking load (N)	42100
Opt. oil position	basso		
Tubing	3/4" R1 FD+FD GAS		
Tubing lenght (mm)	8000		
Min hydraulic oil (L)	36,5		

SECURITY DEVICES	Manufacturer	Model	Certificate
Safety Gear	PFB	BP1	TÜV AFV515
Block Valve	START	1/2"03026/01;03026/02	IMQ CA50.00526
Key Locks	TIEFFE	TIEFFE2000	IMQ I0110

MACHINERY LOCATION			
At floor	1	Length of the hose travel	4000 (mm)
Cables enter in shaft: Side	A		

CABIN		CABIN ACCESSORIES	
Panels	Grigio PPS1	½ Mirror	Lati B
Finishes	Inox Scotch Brife	Handrail	INOX S.B., Latl B
Oper. panel	VERTICAL		
Floor	Gomma a Bolle - Nera		
Roof	DAMA-Bianco A1		

OTHER ACCESSORIES
Enabling key for the cabin button pad, double insertion
Guides dimension 2.5 m
Manual pump
Manostat with overweight signal
Double speed
Automatic control 2008
Return to the lower floor after adjustable time
Reinforced arcade
Handles CASPIM
Full height infra-red curtain

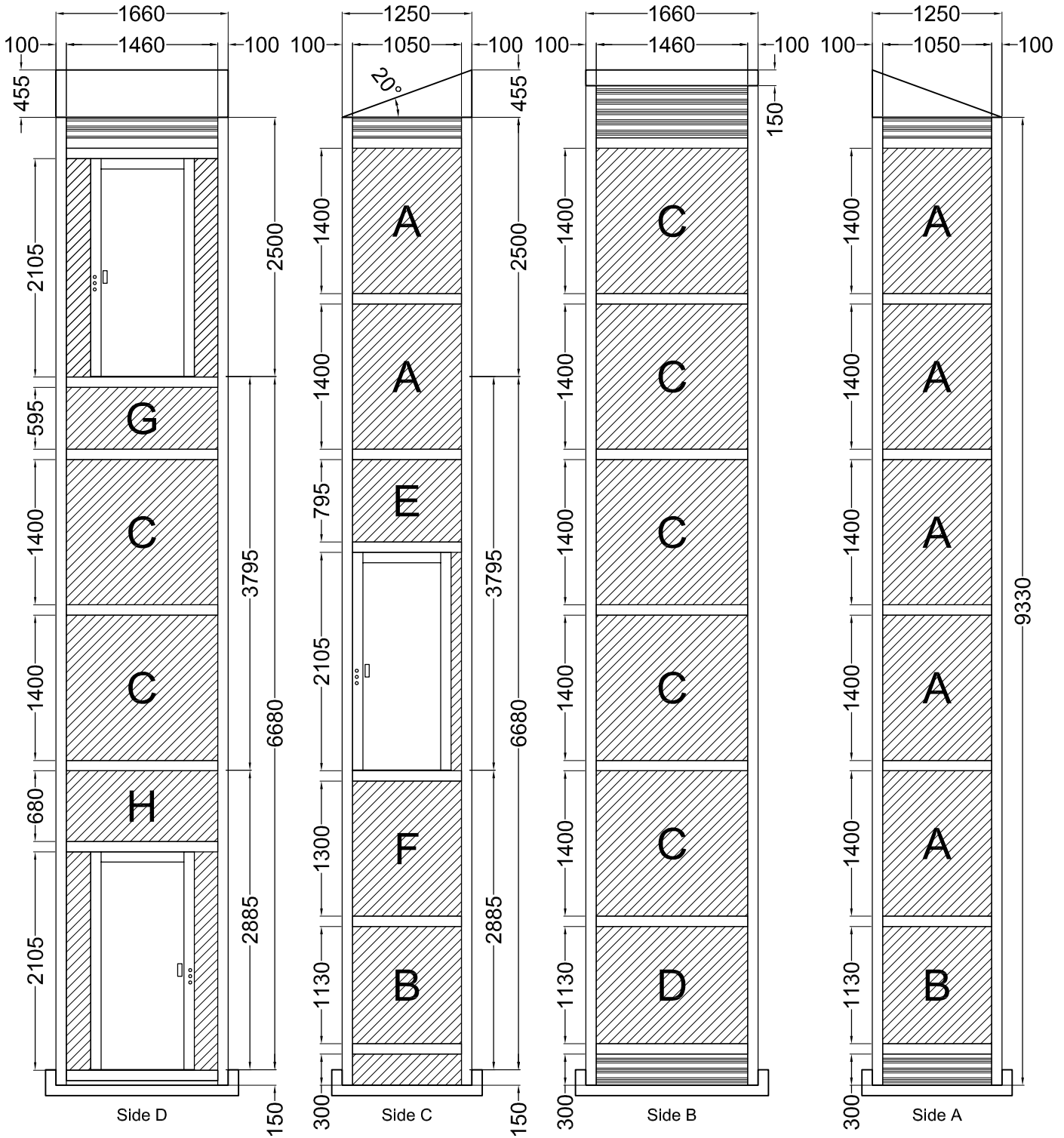
The approval of this plan serves also as confirmation of delivery of the masonry manual rev.3.

		Final Design Drawings	1° STESURA
		L. Del Bianco	19/10/10
		Final Design Drawings	
		SCALE	SHEET
	OUT OF SCALE	2/4	

Shaft V315B (Struttura V315B)

ENVIRONMENT	VERSION	CLADDING	START	ROOF	ANCHORAGE
Outside	Galvanized	Sheet Cladding	Pit bottom	For Outside	Anchorage to care of the Customer. Ancoraggio a cura del Committente.
Esterno	Zincata	Lamiera	Fondo Fossa	Per esterno	

Anchorage in height of 3 frames in head and every 3.5 m max



Final Design Drawings L. Del Bianco	1° STESURA 19/10/10
Final Design Drawings	
SCALE	SHEET 3/4

- GRID Galvanized
- CLADDING Galvanized

Cladding

Tag	Q.ty	Type	Thickness	Width	Height
A	7	Sheet Cladding		1050	1400
B	2	Sheet Cladding		1050	1130
C	7	Sheet Cladding		1460	1400
D	1	Sheet Cladding		1460	1130
E	1	Sheet Cladding		1050	795
F	1	Sheet Cladding		1050	1300
G	1	Sheet Cladding		1460	595
H	1	Sheet Cladding		1460	680

