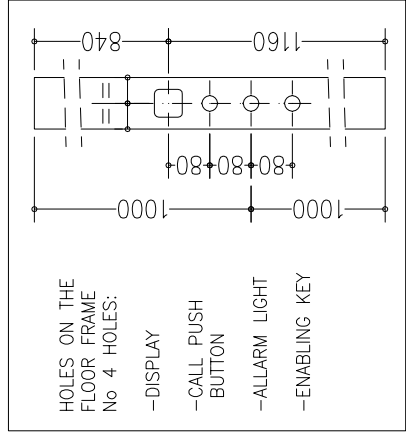
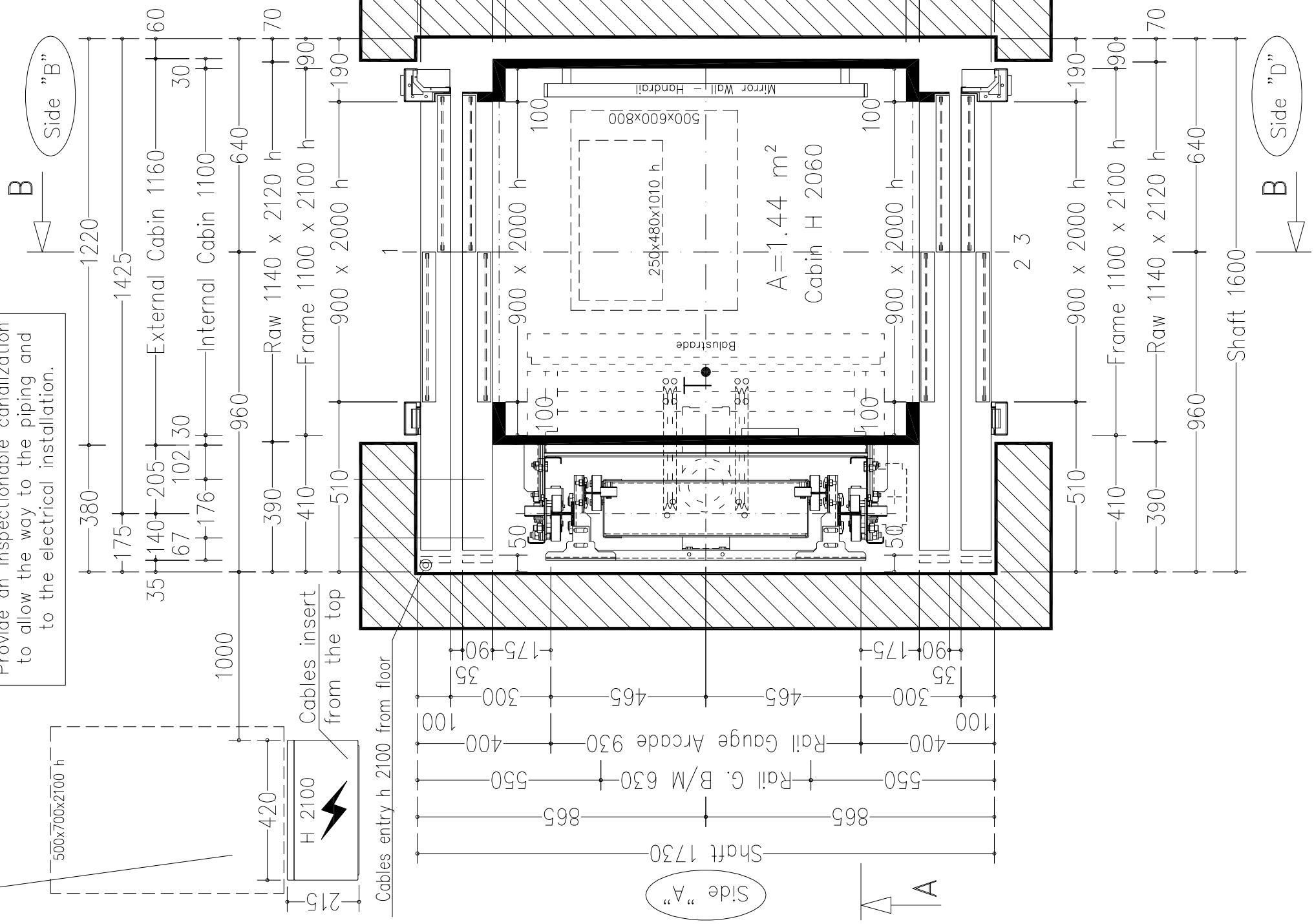
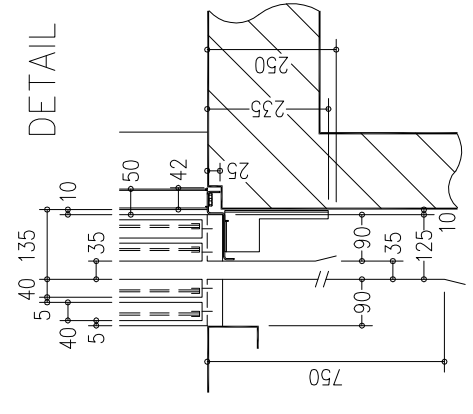


Handling switchboard at floor 1, protected against water leaks and inside of the building.

Provide an inspectionable canalization to allow the way to the piping and to the electrical installation.



THRESHOLD
DETAIL



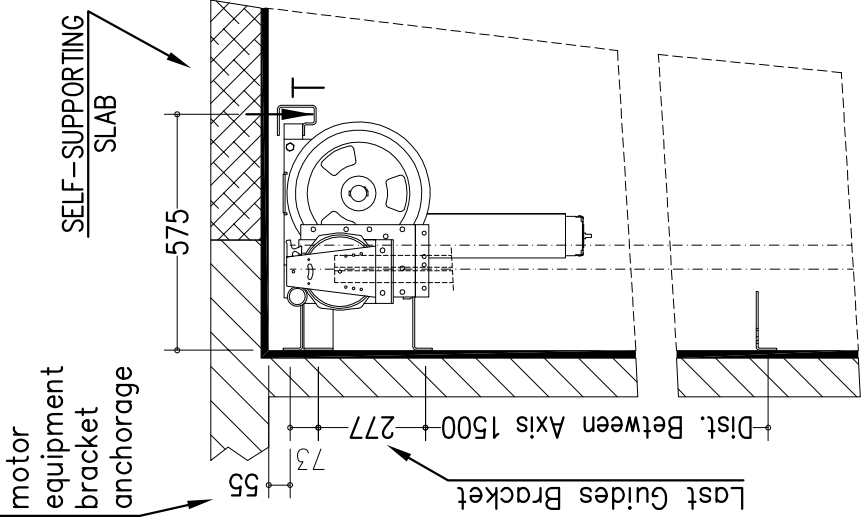
NOTE:
-ELECTRIC PANEL WITH MICROCONTROLLER CARD AND MULTIVISION DISPLAY

NOT STANDARD:
-CABIN PREPARED FOR FLOOR COVERING AT CUSTOMER EXPENSE (FLOOR THICKNESS 15 mm)

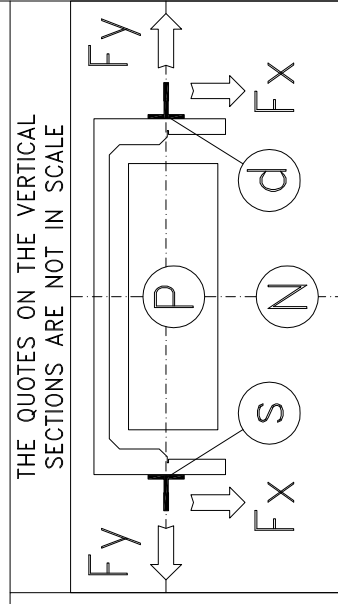
STANDARD ACCESSORIES:
-REMOVABLE ENABLING KEY FOR THE CABIN BUTTON PANEL
-REMOVABLE ENABLING KEY FOR THE FLOOR BUTTON PANEL
-PUSH BUTTON PANEL VERTICAL
-DISPLAY ON THE LANDINGS

NOT STANDARD ACCESSORIES:
-FULL HEIGHT INFRA-RED CURTAIN
-AUTO DIALER EXCLUDED

cabin mass and operators	ATLANTIS - SM 454
panels	Similinox F12PPS
finishings	INOX BA (Lucido)
floor	ESCLUSO DALLA FORNITURA
push button panel	Verticale a n° 6 fori
roof	Disegno Labirint INOX BA (Lucido)
cabin doors colour	INOX BA (Lucido) con finestr. panoramica fumè (oper. Prisma "Micro Std")
landing doors colour	INOX BA (Lucido)
frame landing doors colour	INOX BA (Lucido)
electrical s. cabinet colour	INOX BA (Lucido)
	Similinox F12PPS



Max loads	blancing mass P (N)	33040
	arcade N (N)	44330
	motor equipment (N)	11488
Thrust during normal operation	Fx (N)	1231
	Fy (N)	460
	s (N)	1755
	d (N)	1755
Thrust of safety gear device intervention	Fx (N)	3532
	Fy (N)	766
	s (N)	13622
	d (N)	13622
reference directive	95/16/CE	
maneuver	universale	
voltage of the battery charger	(V)	220V
batteries		12V 27Ah
reduction gear	110 PAM 90 1/49	
motor	TTN209D 42Vcc	2070W 66A 1100rpm
block brake	12 N\m	- 24 V
arcade	930-480kg-m80x960-H2410	
arcade mass (Kg)	175	
balancing (%)	40	
balancing mass (Kg)	822	
components of the balanc. mass	n° 12 pani e n° 150 piastre	
suspension cables	9x6	
length (mm)	11250	
minimum breaking load (N)	42100	
balanc. mass shock absorbers	ETN 125 x 80	
cabin shock absorbers	ETN 125 x 80	
cabin guides	T70x70x9 x 10125 mm	- staffe n° 8
balancing mass guides	T50/A x 9925 mm	
speed (m/s)	0,3	
load capacity (Kg)	480	
people capacity	6	

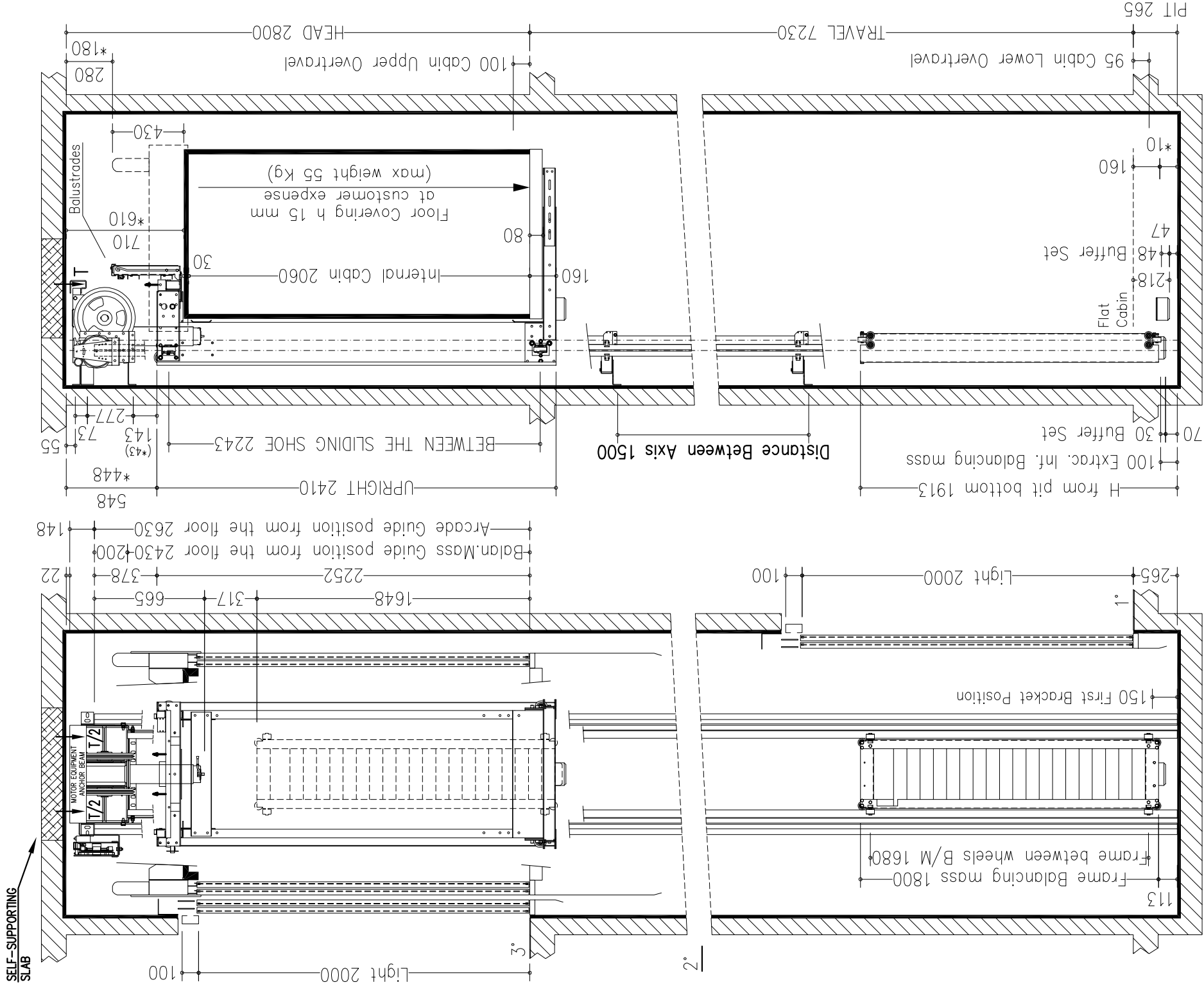


Interfloors

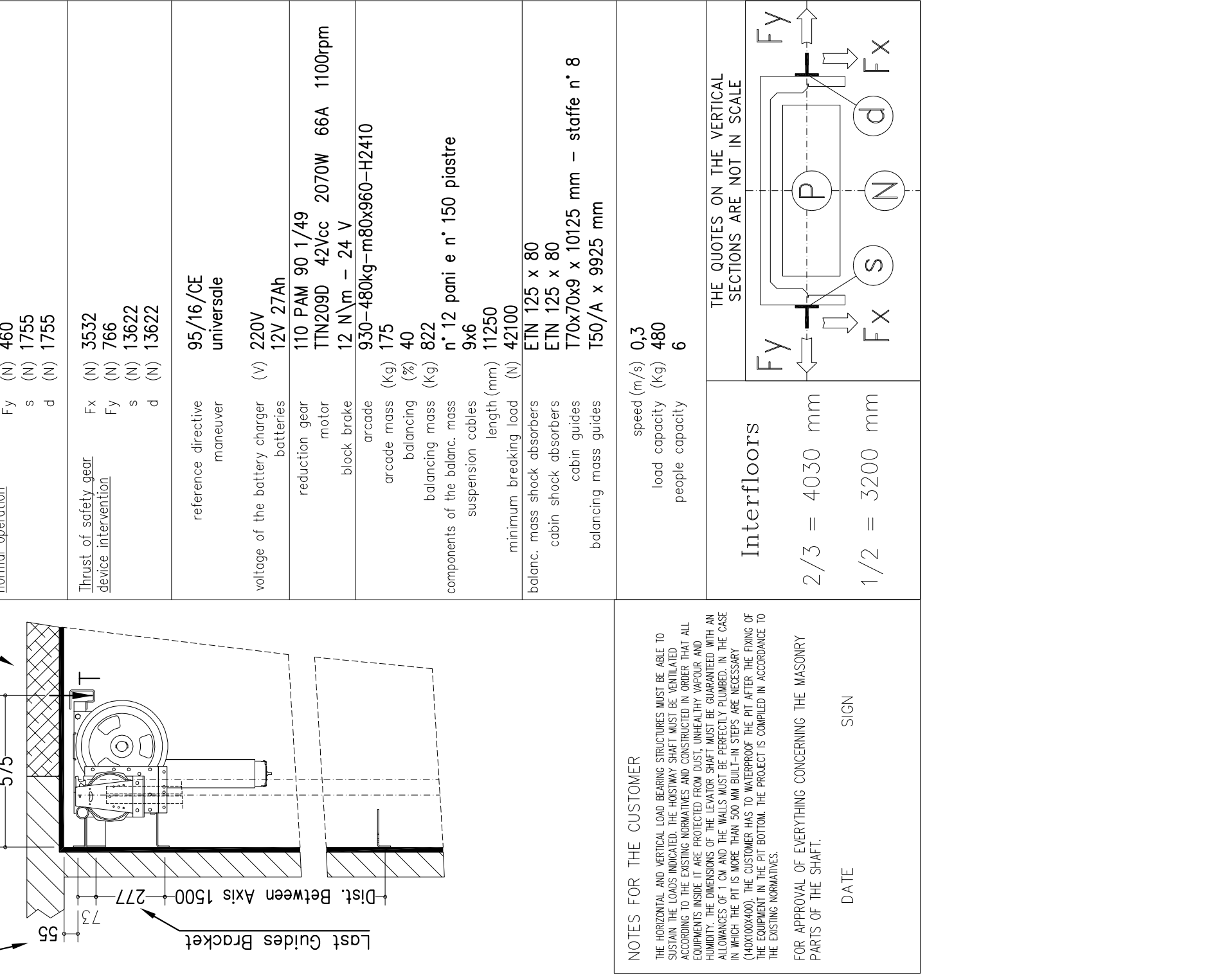
2/3 = 4030 mm

1/2 = 3200 mm

SECTION A-A
VENTILATION ON THE TOP OF THE SHAFT COMPLYING TO THE EXISTING NORMATIVES



SECTION B-B
VENTILATION ON THE TOP OF THE SHAFT COMPLYING TO THE EXISTING NORMATIVES



NOTES FOR THE CUSTOMER

THE HORIZONTAL AND VERTICAL LOAD BEARING STRUCTURES MUST BE ABLE TO SUSTAIN THE LOADS INDICATED. THE HOISTWAY SHAFT MUST BE VENTILATED ACCORDING TO THE EXISTING NORMATIVES AND CONSTRUCTED IN ORDER THAT ALL EQUIPMENTS INSIDE IT ARE PROTECTED FROM DUST, UNHEALTHY VAPOUR AND HUMIDITY. THE DIMENSIONS OF THE LEVATOR SHAFT MUST BE GUARANTEED WITH AN ALLOWANCES OF 1 CM AND THE WALLS MUST BE PERFECTLY PLUMBED. IN THE CASE IN WHICH THE PIT IS MORE THAN 500 MM BUILT-IN STEPS ARE NECESSARY (140X100X400). THE CUSTOMER HAS TO WATERPROOF THE PIT AFTER THE FIXING OF THE EQUIPMENT IN THE PIT BOTTOM. THE PROJECT IS COMPILED IN ACCORDANCE TO THE EXISTING NORMATIVES.

FOR APPROVAL OF EVERYTHING CONCERNING THE MASONRY PARTS OF THE SHAFT.

DATE _____ SIGN _____

reinforced-concrete slab on embankment

*QUOTES IN OVERTRAVEL