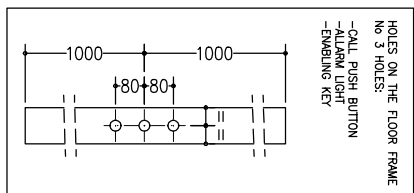


Provide an inspectionable canalization to allow the way to the piping and to the electrical installation.



- Metallic structure for indoor with flat covering.
- Structure from pit bottom.
- Structure and sheet covering: RAL 1036
- Structure covering at customer expense.
- Glass frame included.
- Anchorage at customer expense.

NOT STANDARD:
 - CABIN PREPARED FOR FLOOR COVERING AT CUSTOMER EXPENSE (FLOOR THICKNESS 15 mm)

STANDARD ACCESSORIES:
 - REMOVABLE ENABLING KEY FOR THE CABIN BUTTON PANEL
 - REMOVABLE ENABLING KEY FOR THE FLOOR BUTTON PANEL
 - PUSH BUTTON PANEL VERTICAL
 - MILK WHITE GLASS WALL WITH ROUND GOLD STEEL FINISH HANDRAIL ON SIDE "C" CABIN
 - MILK WHITE GLASS WALL WITHOUT HANDRAIL ON SIDE "D" CABIN

- OUTSIDE COVERING CABIN ON SIDE "B", "C", "D": PANELS IN GOLD STEEL FINISH
 FINISHINGS LIKE INSIDE IN GOLD STEEL FINISH

NOT STANDARD ACCESSORIES:
 - FULL HEIGHT INFRA-RED CURTAIN

Handling witchboard at floor 2, protected against water leaks.

Cables insert from the top

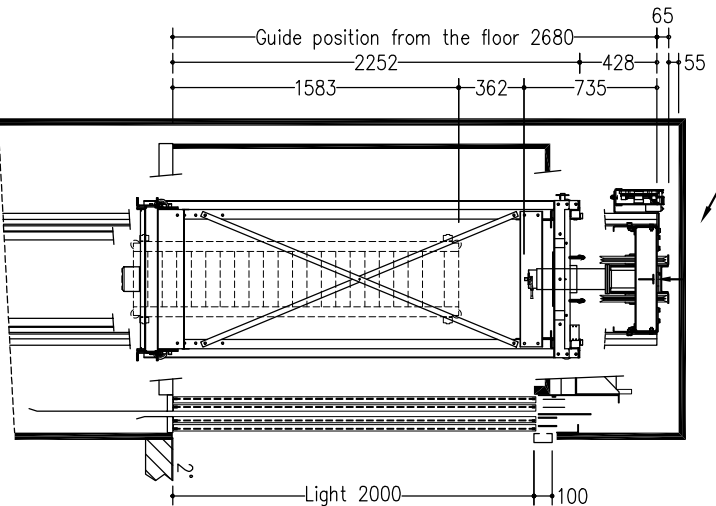
cabin mass and operators (kg)	ATLANTS - SM
	442
panels	INOX Oro lucido
	INOX Oro lucido
floor	ESCLUSO DALLA FORNITURA
	Verticale a n° 5 fori + GONG
roof	Disegno Donna Bianco A1
cabin doors colour	INOX Oro lucido con vetro (oper. CMM)
landing doors colour	INOX Oro lucido con finestr. panoramico trasparente
frame landing doors colour	INOX Oro lucido
electrical s. cabinet colour	INOX Oro lucido

Shaft typology: METALLIC STRUCTURE INCLUDED				DISEGNO DEFINITIVO	
Stops:	Doors:	Sheet	Sheet dimension	Scale	Drawing by
2	2	1/4	A3	1/15	Daniilo Tomei
Modifications				first draft	final drawing
d	d	d	d	28/09/2007	23/11/2007
caso ero 350C velocità ero 0,30 m/s; entrambe le pareti pannel. cab. in bianco latte; armadio ero di piano 1; tempom. struttura a carico cliente.				MODEL	
				SUPERMEC	

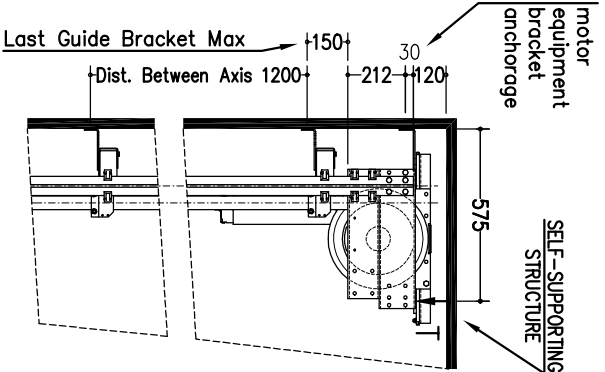
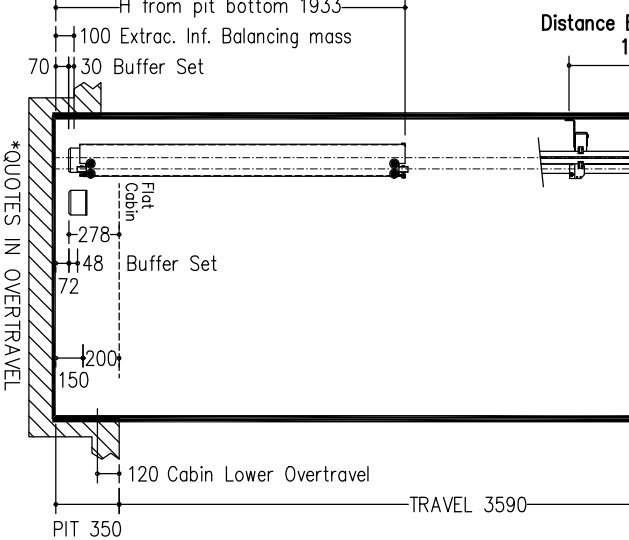
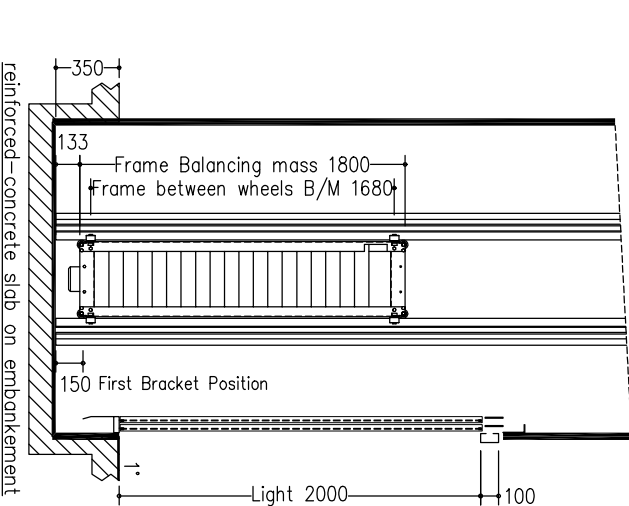
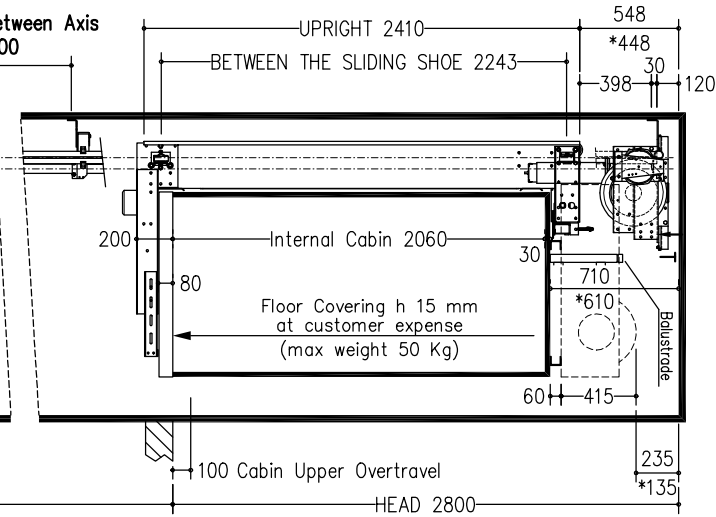


T
MOTOR EQUIPMENT
FLOOR COVERING

SECTION B-B
SELF-SUPPORTING
STRUCTURE
VENTILATION ON THE TOP OF THE SHAFT COMPLYING TO THE EXISTING NORMATIVES

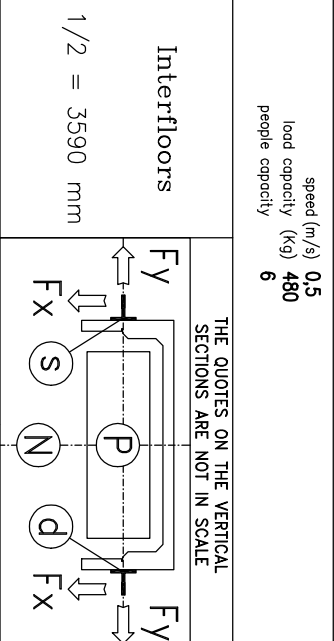


SECTION A-A
SELF-SUPPORTING
STRUCTURE



Max loads	blancing mass P (N) 34178
	arcode N (N) 43644
	motor equipment T (N) 11585
Thrust during normal operation	Fx (N) 1221
	Fy (N) 925
	s (N) 1147
	D (N) 1147
Thrust of safety gear device intervention	Fx (N) 3493
	Fy (N) 1542
	s (N) 12843
	D (N) 12843
reference normatives	pr EN81.21
maneuver	universide
voltage of the battery charger	(V) 220V
batteries	FIAMM-GS FG22703 12V 27Ah
reduction gear	110 PAM 90 1/40 STM
motor	DAQU EE302 c.c. 40 V
block brake	12 N.m - 24 V
arcode	930-630kg-m120x960-H2410
arcode mass (kg)	175
balancing (%)	50
balancing mass (kg)	856
components of the bolanc. mass	n° 10 panni e n° 170 piastre
suspension cables	AL1070 9x6
length (mm)	7750
minimum breaking load (N)	42100
bolanc. mass shock absorbers	ETN 125 x 100
cabin shock absorbers	ETN 125 x 100
cabin guides	G770 x 6620 mm - stoffe n° 7
balancing mass guides	RF50 x 6620 mm
speed (m/s)	0.5
load capacity (kg)	480
people capacity	6

NOTES FOR THE CUSTOMER
THE HORIZONTAL AND VERTICAL LOAD BEARING STRUCTURES MUST BE ABLE TO SUSTAIN THE LOADS INDICATED. THE HOISTWAY SHAFT MUST BE VENTILATED ACCORDING TO THE EXISTING NORMATIVES AND CONSTRUCTED IN ORDER THAT ALL EQUIPMENTS INSIDE IT ARE PROTECTED FROM DUST, UNHEALTHY VAPORS AND HUMIDITY. THE DIMENSIONS OF THE LIFTWAY SHAFT MUST BE COMPATIBLE WITH AN OVERTRAVEL OF 120 mm. THE DIMENSIONS OF THE SHAFT MUST BE COMPATIBLE WITH AN OVERTRAVEL OF 120 mm. THE CUSTOMER HAS TO WATERPROOF THE PIT AFTER THE FINISH OF THE EQUIPMENT IN THE PIT BOTTOM. THE PROJECT IS COMPILED IN ACCORDANCE TO THE EXISTING NORMATIVES.
FOR APPROVAL OF EVERYTHING CONCERNING THE MASONRY PARTS OF THE SHAFT.
DATE SIGN



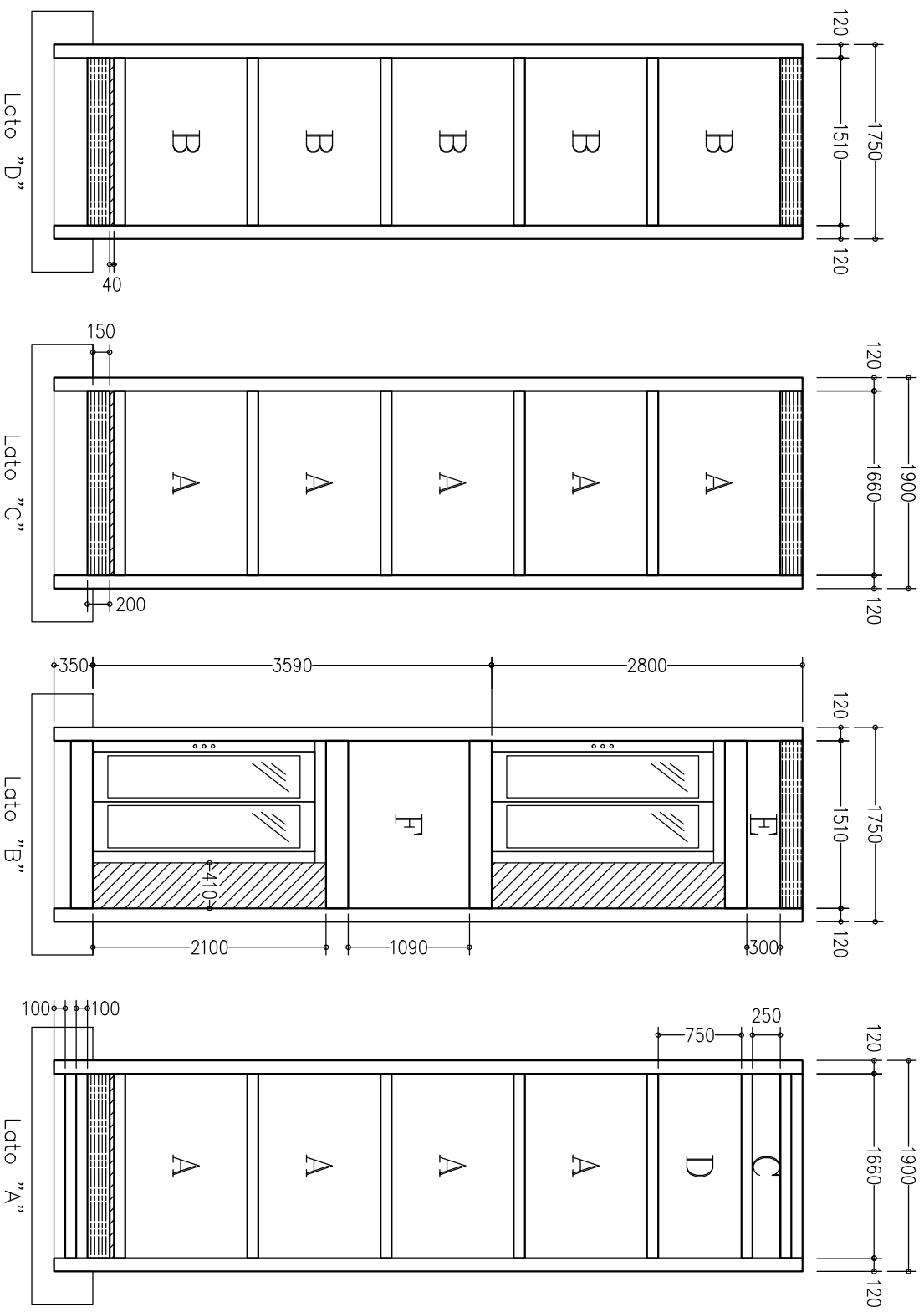
Shaft typology:	METALLIC STRUCTURE INCLUDED
Stops:	2
Doors:	2
Sheet:	2/4
Sheet dimension:	A3
Scale:	1/30
Drawing by:	Donilo Tomei
first draft:	28/09/2007
final drawing:	23/11/2007
MODEL:	SUPERMEC
first draft:	23/11/2007
final drawing:	23/11/2007
MODEL:	SUPERMEC

Modifications

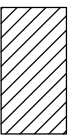
d	
c	
b	
a	

cons evo 3500c, velocità evo 0,30 m/s, entranche le pareti piane, cab. in bianco latte, armadio evo di piano 1°, tempom. struttura a carico cliente.


EP
Elevatori Pemanotti



Griglie di aerazione



Tamponeamenti RAL 1036

Shaft typology: METALLIC STRUCTURE INCLUDED				DISEGNO DEFINITIVO	
Stops:	2	Doors:	2	Sheet	3/4
Modifications	d.	Sheet dimension	A3	Drawing by	Daniilo Tomei
	c.			First draft	28/09/2007
	b.			Final drawing	23/11/2007
	a.			MODEL	23/11/2007
T. corsa ero 3500; velocità ero 0,30 m/s; entrambe le pareti pannel. cob. in bianco latte; armadio ero di piano 1; tampone, struttura a carico cliente.					
				SUPERMEC	
		<i>Elevator Pannellati</i>			