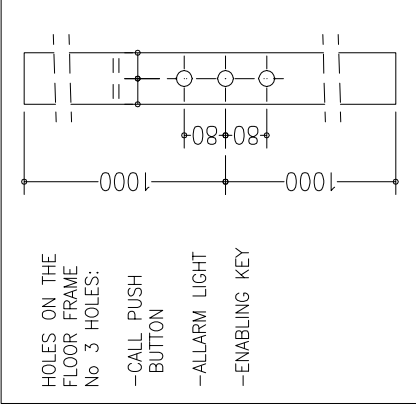
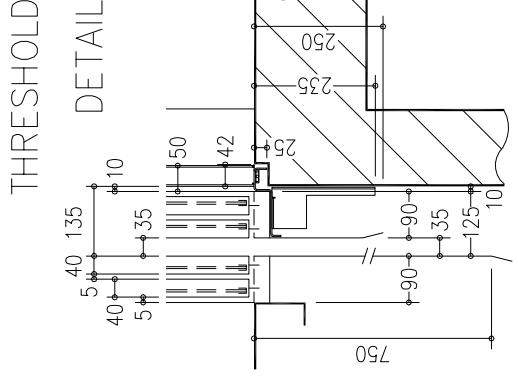


Provide an inspectionable canalization to allow the way to the piping and to the electrical installation.

Handing switchboard at the floor 1 protected against water leaks and inside of the building.



NOT STANDARD:

- CABIN PREPARED FOR FLOOR COVERING AT CUSTOMER EXPENSE (FLOOR THICKNESS 15 mm)
- CABIN OUTSIDE COVERING ON SIDE "C": POLISHED STAINLESS STEEL


STANDARD ACCESSORIES:

- REMOVABLE ENABLING KEY FOR THE CABIN BUTTON PANEL
- REMOVABLE ENABLING KEY FOR THE FLOOR BUTTON PANEL
- PUSH BUTTON PANEL VERTICAL

NOT STANDARD ACCESSORIES:

- FULL HEIGHT INFRA-RED CURTAIN
- AUTO DIALER EXCLUDED

cabin mass and operators (kg)	ATLANTIS - SM 433
panels	INOX BA (Lucido)
finishings	INOX BA (Lucido)
floor	ESCLUSO DALLA FORNITURA
push button panel	Verticale a n° 7 fori
roof	Faretti Bianco A1
cabin doors colour	INOX BA (Lucido) con fin. pan. trasp. (oper. CMM-E.2006)
landing doors colour	INOX BA (Lucido) con finestr. panoramica trasparente
frame landing doors colour	INOX BA (Lucido)
electrical s. cabinet colour	Similinox F12PPS

Shaft typology: MASONRY		Sheet dimension: A3		Scale: 1/15	Sheet: 1/2	Doors: 3	Sheet: 3	FINAL DESIGN DRAWINGS	
Stops:	d.	c.	b.	a.	13/07/2009	D. Tomei	1/15	D. Tomei	03/08/2010
Modifications									
CUSTOMER: LIFT SHOP									
Place of installation: —									
									
Provide an inspectionable canalization to allow the way to the piping and to the electrical installation.									
Handing switchboard at the floor 1 protected against water leaks and inside of the building.									
CUSTOMER: LIFT SHOP MODEL: SUPERMEC D. Tomei 03/08/2010									

Max loads

blancing mass P	(N)	33880
arcade N	(N)	43288
motor equipment T	(N)	11487

Thrust during normal operation	Fx (N)	1212
	Fy (N)	-925
	s (N)	1634
	d (N)	1634

Thrust of safety gear device intervention

Fx (N)	3466
Fy (N)	-1542
s (N)	13241
d (N)	13241

reference normatives maneuver
pr EN81.21 (2006)
universale

voltage of the battery charger batteries

(V)	220V
-----	------

reduction gear motor

FIAMM-GS FG22703 12V 27Ah
110 PAM 90 1/49 STM
DAGU EE302 c.c. 40 V

block brake

12 N\m - 24 V

arcade

930-480kg-m80x960-H2410

arcade mass (Kg)

175

balancing (%)

50

balancing mass (Kg)

848

components of the balanc. mass suspension cables

n° 10 pani e n° 168 piastre
ALIOTO 9x6
10550
length (mm)
42100
minimum breaking load (N)

balanc. mass shock absorbers

ETN 125 x 80
ETN 125 x 80

cabin shock absorbers

GF770 x 9430 mm - staffe n° 8

balancing mass guides

RF50 x 9230 mm

speed (m/s)

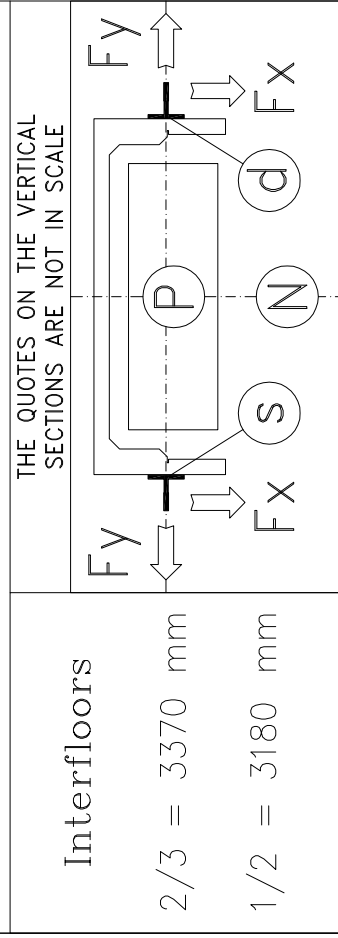
0,3

load capacity (Kg)

480

people capacity

6



FINAL DESIGN DRAWINGS

Sheet dimension	A3	Scale	1/30	D. Tomei	13/07/2009	first draft	
Stops:	3	Doors:	3	Sheet	2/2	D. Tomei	03/08/2010

Shaft typology: **MASONRY**

Modifications:

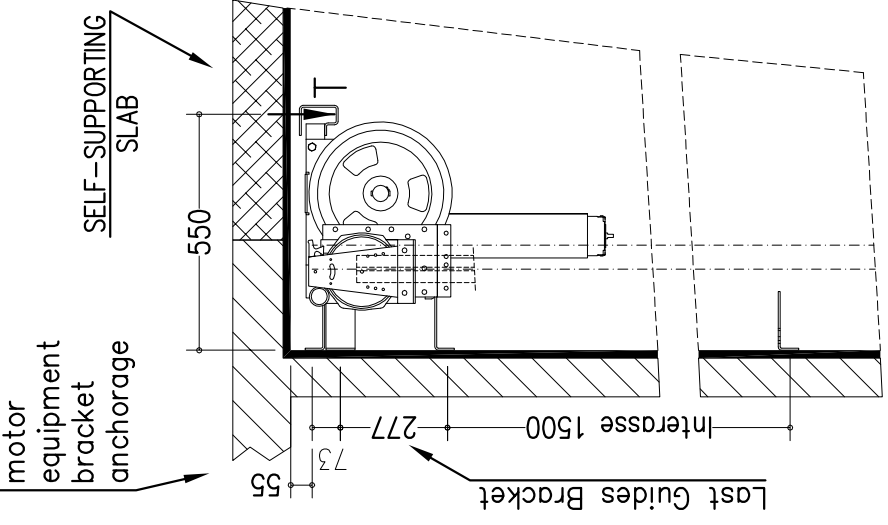
d.	
c.	
b.	
a.	ante, telai e Q.E. erano inox S.B.; parete panor. al posto del metà specchio; Q.E. era in posizione std. al 3; corsa era 6000.

CUSTOMER: **LIFT SHOP**

Place of installation: _____

MODEL: **SUPERMEC**

DATE: _____ SIGN: _____

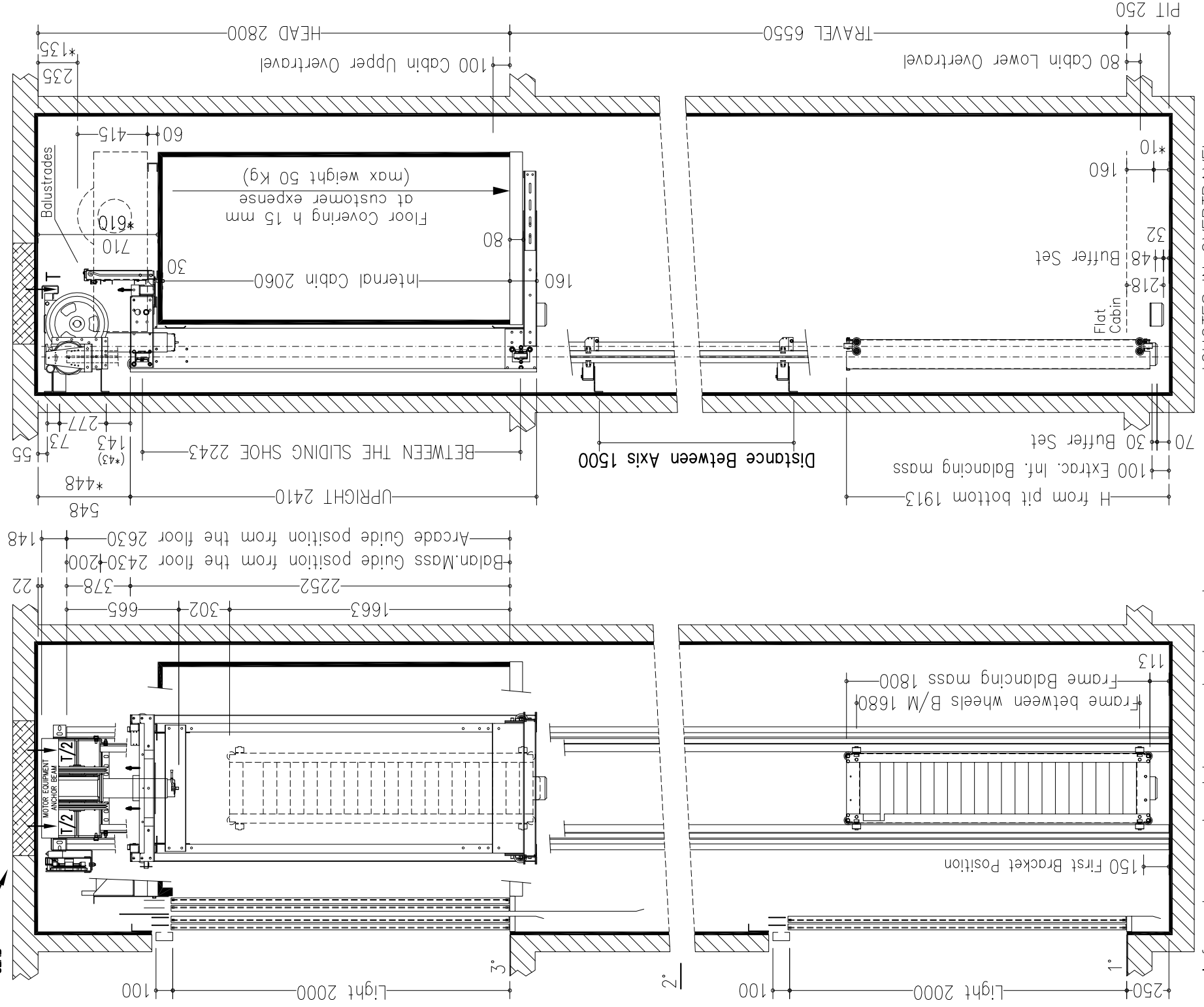


NOTES FOR THE CUSTOMER

THE HORIZONTAL AND VERTICAL LOAD BEARING STRUCTURES MUST BE ABLE TO SUSTAIN THE LOADS INDICATED. THE HOISTWAY SHAFT MUST BE VENTILATED ACCORDING TO THE EXISTING NORMATIVES AND CONSTRUCTED IN ORDER THAT ALL EQUIPMENTS INSIDE IT ARE PROTECTED FROM DUST, UNHEALTHY VAPOUR AND HUMIDITY. THE DIMENSIONS OF THE LEVATOR SHAFT MUST BE GUARANTEED WITH AN ALLOWANCES OF 1 CM AND THE WALLS MUST BE PERFECTLY PLUMBED. IN THE CASE IN WHICH THE PIT IS MORE THAN 500 MM BUILT-IN STEPS ARE NECESSARY (140X100X400). THE CUSTOMER HAS TO WATERPROOF THE PIT AFTER THE FIXING OF THE EQUIPMENT IN THE PIT BOTTOM. THE PROJECT IS COMPILED IN ACCORDANCE TO THE EXISTING NORMATIVES.

FOR APPROVAL OF EVERYTHING CONCERNING THE MASONRY PARTS OF THE SHAFT.

SECTION A-A
VENTILATION ON THE TOP OF THE SHAFT COMPLYING TO THE EXISTING NORMATIVES



reinforced-concrete slab on embankment



CUSTOMER