

## Welcome to Lift Shop's special Festive Season Edition!

It's only a matter of time till the summer weather actually arrives and we're sure you are gearing up for the big festive season celebrations. Beaches, barbeques, delicious fresh food, family and good friends... that's what this time of year in Australia is really all about.


Before the holidays begin, we wanted to share with you the latest news on our very own Supermec, as well as show off some of our latest installations in properties just like yours.

Finally, as we bid farewell to 2011, we'll leave you with some resolutions to consider for 2012, and look forward to sharing more exciting news with you in the New Year.

## Lift Shop perfects luxury lift design and performance

Supermec is sporting a new level of performance and sophistication with a series of enhancements. It is the first battery lift on the market to use single-phase voltage 230V with minimum energy consumption and a reduced environmental impact. Its low energy consumption is comparable to that of a regular home appliance and it features an effective backup battery system that allows the lift to continue operating normally even in the event of a power failure.

In addition, impressive new operational and design features incorporated into the Supermec and Supermec 2 models, include:

- New **drive system** that ensures improved power and efficiency, greater travel comfort and a more effective diagnostic function
- New **control panel** with microprocessor for simplified, speedier installation and set-up, featuring a battery rescue system
- Enhanced in-cabin **multi-vision display**, presenting information that is easily readable in a vibrant display
- Electronic **belt door operator** with dedicated driver  technology derived from recent research and development, and designed specifically for Supermec
- **Custom car sizes** to suit any requirements
- Stylish new **LED lighting designs** for the cabin to minimise energy consumption and increase longevity
- Extended range of **floor and wall finishes** to ensure that every Supermec is unique
- **Smarter packaging** with wooden reinforcements for freight delivery to any destination

Whatever it is, it has to work effortlessly. Ergonomic principles like the golden triangle in the kitchen help us to plan spaces that function well, but if you really think about how you as an individual operate on a daily basis then you can fine tune the design of your home and really maximise the effortless flow of daily tasks.

Lift Shop is committed to delivering world-class products and services to customers around Australia, and these improvements represent another way we are delivering on that. Our passion is unwavering when it comes to innovation and bringing the best new ideas and technologies to the competitive Australian residential lift market

## Lift Shop Showcase



### On the right track

Queensland Rail appointed Lift Shop to design and install a complete lift solution that included the addition of a new wing onto the side of the existing high-rise building. With rail tunnels underground, excavation wasn't possible so a lift with a minimal pit requirement was essential. Lift Shop's Supermec lift was selected and customised to complement the building's refurbishment, featuring timber and alucobond cladding and lush new carpet. The cabin also features wall mounted buttons with stylish stainless steel faceplates.

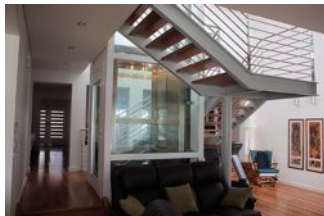


### Rock Solid

The owners of this character packed elevated home in Sydney's Eastern suburbs were starting to find that the large number of steps at the front of the property was making access too difficult. But because they loved the home and the location so much, they were prepared to do anything to be able to stay rather than move.

So when they decided to give the home a makeover, they also factored in a lift. This has involved excavating an 18m tunnel through solid rock to get to the base of where the lift shaft will be located, and then an additional 10m of rock was then excavated for the lift shaft to be constructed.

The owners were impressed with the range of sizes and finishes possible with the FREEDOMLIFT and also the in-cabin self rescue feature.



### ElfoLift has it all wrapped up

When the owners of a brand new home in New South Wales' Hunter region were looking for a striking centerpiece that would deliver real 'Wow' factor, Lift Shop had the ideal solution. Working with the owners' architect, Lift Shop designed and installed an ElfoLift with steel shaft, which was cleverly modified to match the home's raked ceilings. The epitome of style and sophistication, the ElfoLift provides convenient access to the home's two floors and acts as the core of a thoughtfully placed wrap-around staircase.



### Prahran Town Hall Library

A glorious old building in the heart of Melbourne needed assisted access to the upper level of its library. Our Lift Shop P2 was selected for its minimalist effect and discount price.

The P2 is an open platform and obtains vertical stability from the front wall. Meaning no tower structure or shaft is required.

The P2 is in stock so you can be assured of a short delivery time and a great deal. It is suitable for indoors and outdoor locations.

## One Last Thing...

Don't forget to think about your aspirations for 2012 and write a checklist of resolutions for your New Year celebrations.

Here are a few suggestions, just to get you started...



*On behalf of the team at Lift Shop, thank you for your continued support. We wish you and your family a safe and enjoyable festive season and look forward to working with you again in 2012.*

## Feedback

*We love to what our customers think. If you have any feedback on any of the above stories, or would simply like to tell us about your Lift Shop lift experience or project, please [contact us](#).*