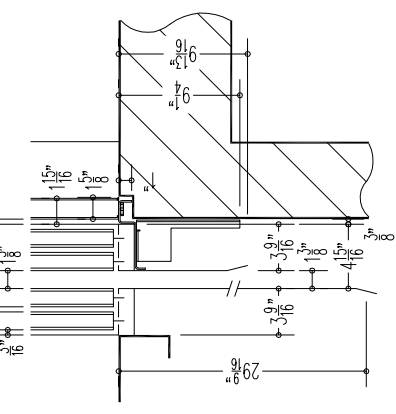


THRESHOLD  
DETAIL



**NOTE:**  
- ELECTRIC PANEL WITH MICROCONTROLLER CARD AND MULTIVISION DISPLAY

**STANDARD ACCESSORIES:**  
- REMOVABLE ENABLING KEY FOR THE FLOOR "1" BUTTON PANEL  
- PUSH BUTTON PANEL VERTICAL  
- BUTTONS PAD ON THE WALL

**NOT STANDARD ACCESSORIES:**  
- FULL HEIGHT INFRA-RED CURTAIN  
- AUTO DIALER EXCLUDED  
- CABIN PREPARED FOR FLOOR COVERING AT CUSTOMER EXPENSE (FLOOR THICKNESS  $\frac{9}{16}$ " - MAX WEIGHT 110.23 lbs)

cabin mass and operators panels	ATLANTIS - RW 888.46
finishings	Similinox F12PPS
floor	INOX Bronzo Pallinato
push button panel	ESCLUSO DALLA FORNITURA Verticale a n° 5 fori
roof	Faretti LED Bianco A1 - LED 24V
cabin doors colour	INOX Bronzo Pallinato (oper. Prisma "Micro Std")
landing doors colour	INOX Bronzo Pallinato
frame landing doors colour	INOX Bronzo Pallinato
electrical s. cabinet colour	Similinox F12PPS

Shaft typology: <b>MASONRY</b>		Scale		DISEGNO DEFINITIVO	
Stops:	3 Doors:	3	Sheet 1/2	17/06/2014	final drawing 24/10/2014
Modifications				D. Tomei	
d.				.	
c.				.	
b.				finiture cabina erano Inox Bronzo SB; ante e telai erano RAL 7001; pulsantiere erano sul telaio; corsa era 5480.	
a.				inserito colori.	
Rif. CA-201401				CUSTOMER	
				SUPERMEC	
				Place of installation	

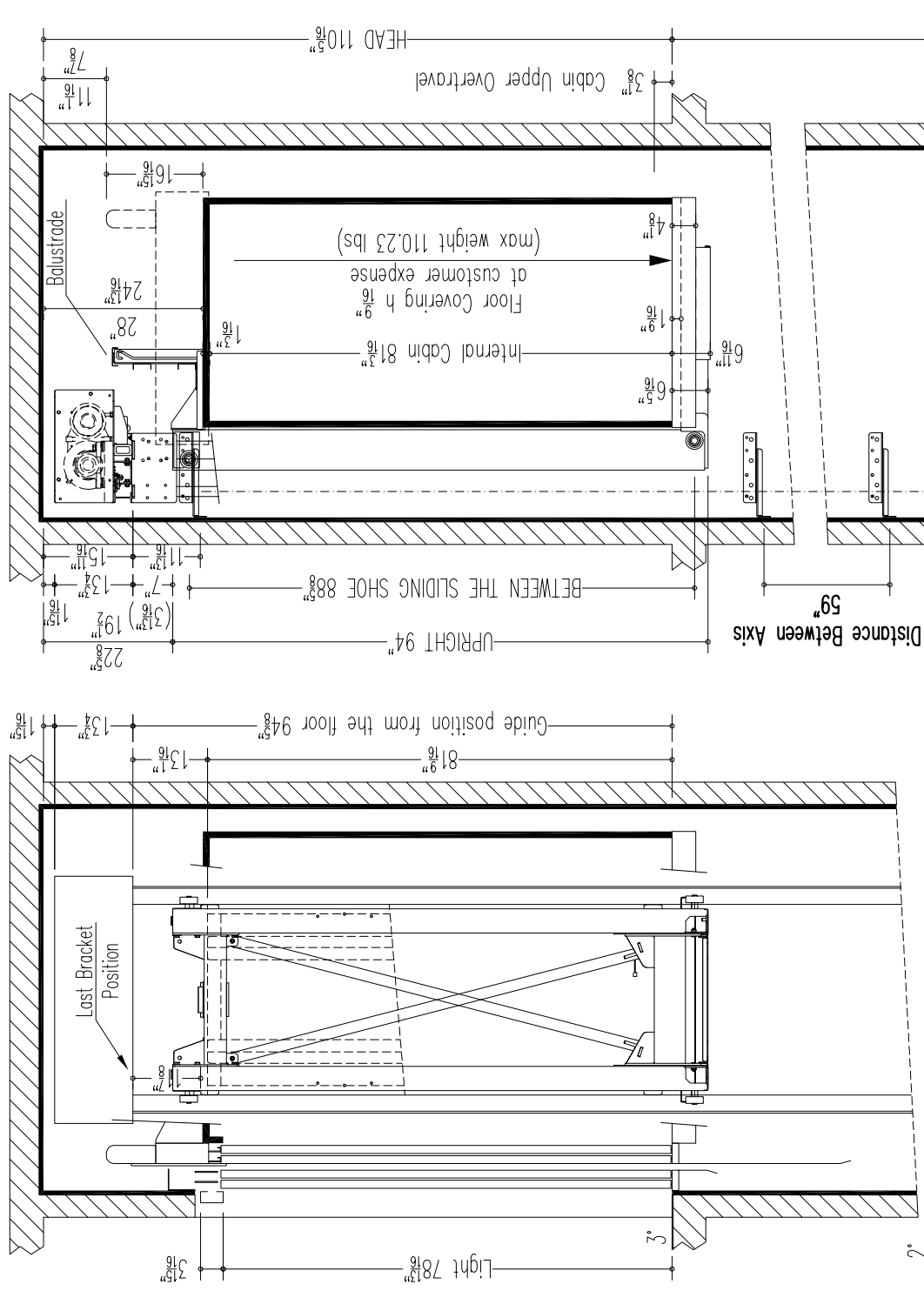
Provide an inspectionable canalization to allow the way to the piping and to the electrical installation.

Handling switchboard at floor 1, protected against water leaks and inside of the building.



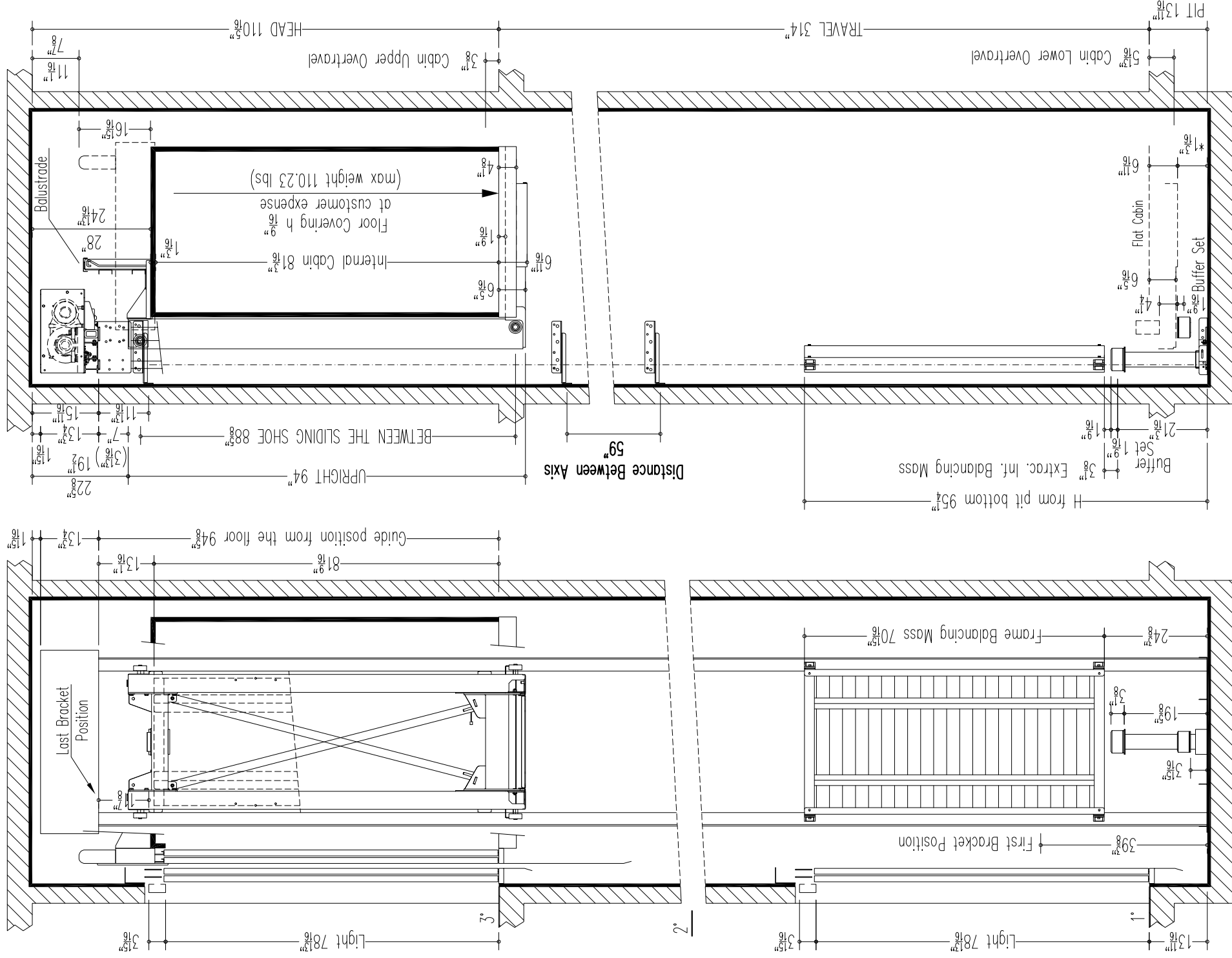
SECTION B-B

VENTILATION ON THE TOP OF THE SHAFT COMPLYING TO THE EXISTING NORMATIVES



SECTION A-A

VENTILATION ON THE TOP OF THE SHAFT COMPLYING TO THE EXISTING NORMATIVES



reinforced-concrete slab on embankment

EN500 EN002.24

blancing mass P (lbf) 7498,65  
cabin N (lbf) 9700,49

Thrust during normal operation  
Fx (lbf) 374,53  
Fy (lbf) -175,57  
s (lbf) 1540,61  
d (lbf) 1540,61  
s' (lbf) 1366,61  
d' (lbf) 1366,61

Thrust of safety gear device intervention  
Fx (lbf) 624,06  
Fy (lbf) 743,44  
s (lbf) 341,48  
d (lbf) 5191,73  
s' (lbf) 167,25  
d' (lbf) 167,25

reference directive 95/16/CE  
maneuver universale  
voltage of the battery charger (V) 230V  
batteries 12V 27Ah

reduction gear TTN331G  
motor TTN209D 42Vcc 2070W 66A  
block brake 23 N/m - 24V

arcade 950-m120x1100-H2385  
safety gear LVT2000 DX P+Q=962-1118 KG n. 2  
arcade mass (lbs) 443,12  
balancing (%) 47  
balancing mass (lbs) 1754,43

plates for counterweight sp. 5 mm n° 118  
leaves for c.w. n° 9x350+n° 3x250+n° 3x200  
WOLF n° 6x6,5 - [inch] 472,44

suspension cables minimum breaking load (lbf) 7081,48  
balanc. mass shock absorbers ETN 125 x 80  
cabin shock absorbers ETN 125 x 80  
cabin guides T80x80x9 x 422,24 inch - brackets n° 8  
balancing mass guides T45/A x 422,24 inch

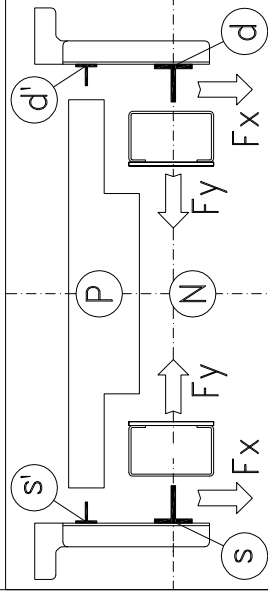
max speed (fpm) 98,42  
load capacity (lbs) 1058,21  
people capacity 6

Interfloors

2/3 = 150" inch

1/2 = 164" inch

THE QUOTES ON THE VERTICAL SECTIONS ARE NOT IN SCALE



NOTES FOR THE CUSTOMER

THE HORIZONTAL AND VERTICAL LOAD BEARING STRUCTURES MUST BE ABLE TO SUSTAIN THE LOADS INDICATED. THE HOISTWAY SHAFT MUST BE VENTILATED ACCORDING TO THE EXISTING NORMATIVES AND CONSTRUCTED IN ORDER THAT ALL EQUIPMENTS INSIDE IT ARE PROTECTED FROM DUST, UNHEALTHY VAPOUR AND HUMIDITY. THE DIMENSIONS OF THE LEVATOR SHAFT MUST BE GUARANTEED WITH AN ALLOWANCES OF 1 CM AND THE WALLS MUST BE PERFECTLY PLUMBED. IN THE CASE IN WHICH THE PIT IS MORE THAN 500 MM BUILT-IN STEPS ARE NECESSARY (140X100X400). THE CUSTOMER HAS TO WATERPROOF THE PIT AFTER THE FIXING OF THE EQUIPMENT IN THE PIT BOTTOM. THE PROJECT IS COMPILED IN ACCORDANCE TO THE EXISTING NORMATIVES.

FOR APPROVAL OF EVERYTHING CONCERNING THE MASONRY PARTS OF THE SHAFT.

DATE SIGN

Shaft typology: MASONRY

Stops: 3 Doors: 3 Sheet 2/2

Sheet dimension A3 Scale 1/30 D. Tomei

first draft 17/06/2014  
final drawing 24/10/2014

Modifications: d. c.

b. finiture cabina erano Inox Bronzo SB; ante e telai erano RAL 7001; pulsantiere erano sul telaio; corsa era 5480.

a. inserito colori.

CUSTOMIFP

Rif. CA-201401

ORDER NUMBER

EN500



DISEGNO DEFINITIVO

ENERGY