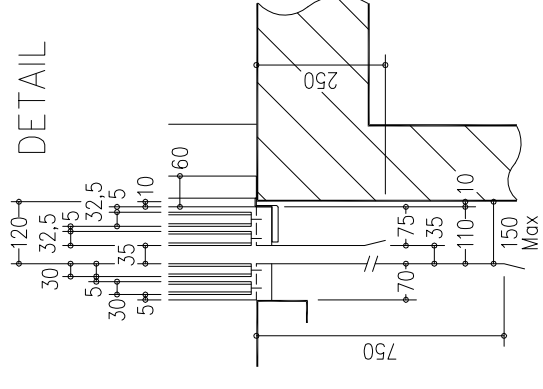


THRESHOLD
DETAIL



STANDARD ACCESSORIES:

- REMOVABLE ENABLING KEY FOR THE CABIN BUTTON PANEL
- REMOVABLE ENABLING KEY FOR THE FLOOR BUTTON PANEL
- PUSH BUTTON PANEL VERTICAL
- DISPLAY ON THE LANDINGS

NOT STANDARD ACCESSORIES:

- FULL HEIGHT INFRA-RED CURTAIN
- AUTO DIALER EXCLUDED
- FRAME H 2100
- MIRROR WALL NO STRIP WITH POLISHED STAINLESS STEEL HANDRAIL
- CABIN PREPARED FOR FLOOR COVERING AT CUSTOMER EXPENSE (FLOOR THICKNESS 20 mm - MAX WEIGHT 40 Kg)

CLASSICA

- cabin mass and operators (Kg) 403
- panels Avorio PPS11
- finishings INOX BA mecc.
- floor ESCLUSO DALLA FORNITURA
- push button panel Verticale a n° 7 fori
- roof Disegno Universal Avorio PPS11 - DIFFUSA 24V
- cabin doors colour Avorio PPS11 (oper. Fermator)
- landing doors colour F41PPS
- frame landing doors colour INOX BA mecc.
- electrical s. cabinet colour F41PPS

Shaft typology: **REINFORCED CONCRETE**

Sheet	4	Doors:	1/2	Scale	1/15	first draft	23/09/2015	D. Tomei	final drawing	15/07/2016
Stops:	4	Doors:	1/2	Scale	1/15	first draft	23/09/2015	D. Tomei	final drawing	15/07/2016
d.										
c.										
b.	invertito valore interpiano basso con alto.									
a.	vano era 1800x1700; nome fermate; posizione vetro e tipologia; colori ante e ciellino; corsa era 9000.									
Rif.	94601 - BRISBANE									
ORDER NUMBER	EN629									
MODEL	ENERGY									



blancing mass P (N) 33518
cabin N (N) 43312

Thrust during normal operation
Fx (N) 1648
Fy (N) 830
s (N) 7325 s' (N) 6139
d (N) 7325 d' (N) 6139

Thrust of safety gear device intervention
Fx (N) 2747
Fy (N) 3764
s (N) 1966 s' (N) 781
d (N) 23622 d' (N) 781

reference directive 95/16/CE
maneuver universale
voltage of the battery charger (V) 230V
batteries 12V 27Ah

reduction gear TTN331G
motor TTN209D 42Vcc 2070W 66A
block brake 23 N/m - 24V

arcade 950-H2335
safety gear Dyn. PR2500UDV35 P+Q=962-1118 Kg n.2
arcade mass (Kg) 201
balancing (%) 47
balancing mass (Kg) 800
lamriere sp. 5 mm n° 119
pani n° 9x350 + n° 3x250 + n° 3x200
WOLF n° 6x6,5 - [mm] 13000

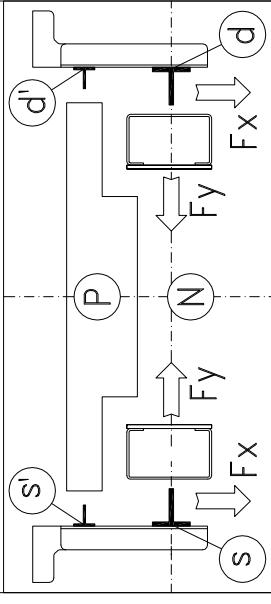
suspension cables
minimum breaking load (N) 31500
balanc. mass shock absorbers ETN 125 x 80
cabin shock absorbers ETN 125 x 80
cabin guides T90/A x 11835 mm - staffe n° 9
balancing mass guides T45/A x 11835 mm


max speed (m/s) 0,5
load capacity (Kg) 480
people capacity 6

Interfloors

G/1 = 3035 mm
B/G = 3025 mm
B1/B = 3005 mm

THE QUOTES ON THE VERTICAL SECTIONS ARE NOT IN SCALE



Sheet dimension	Scale	1/30	first draft	23/09/2015	D. Tomei	final drawing	15/07/2016
Stops:	Doors:	4	Sheet	2/2			
Shaft typology:	REINFORCED CONCRETE						
Modifications	d.						
	c.						
	b.	invertito valore interpiano basso con alto.					
	a.	vano era 1800x1700; nome fermate; posizione vetro e tipologia; colori ante e ciellino; corsa era 9000.					
Rif.	94601 - BRISBANE						
ORDER NUMBER	EN629						
							
	ENERGY						

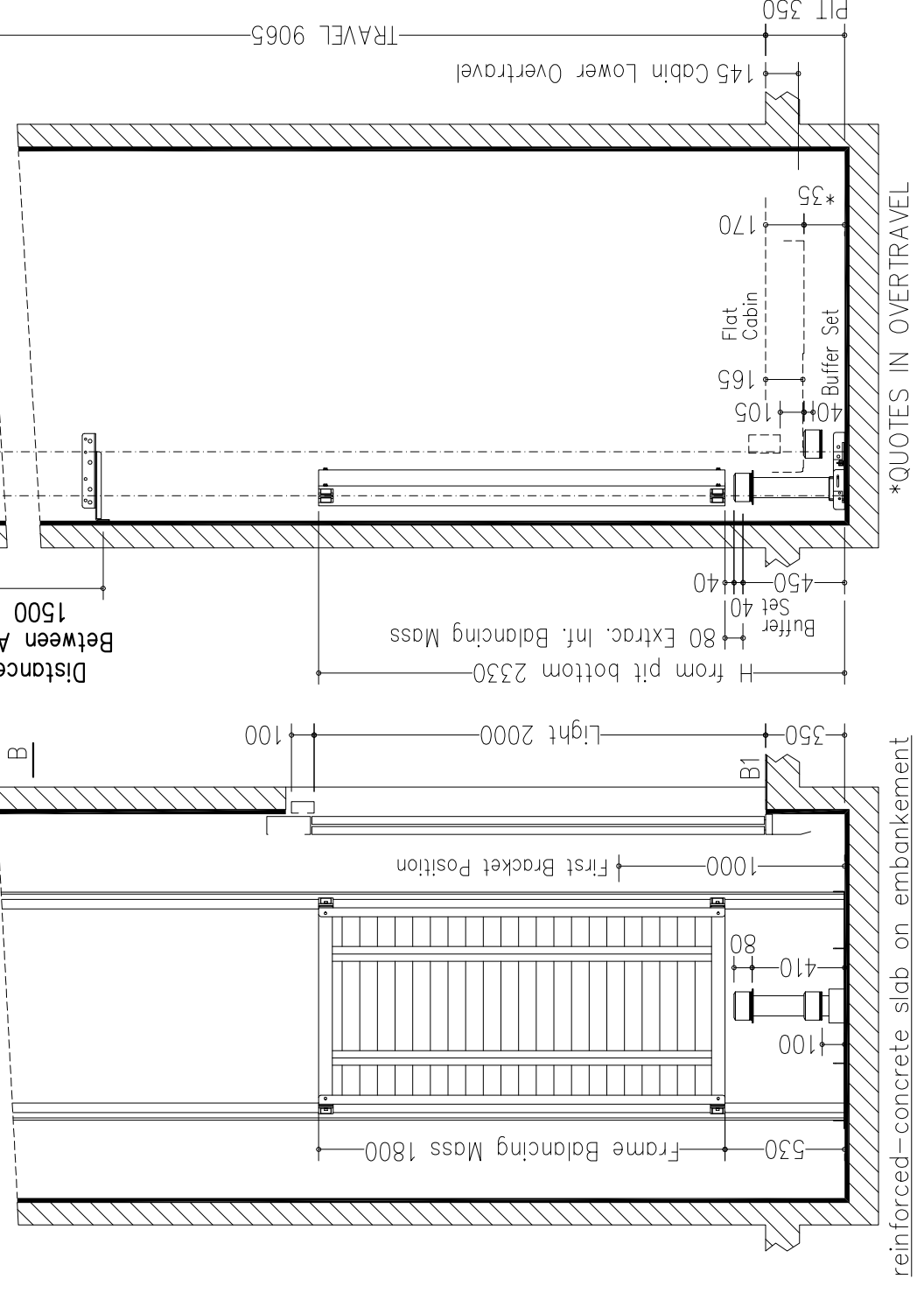
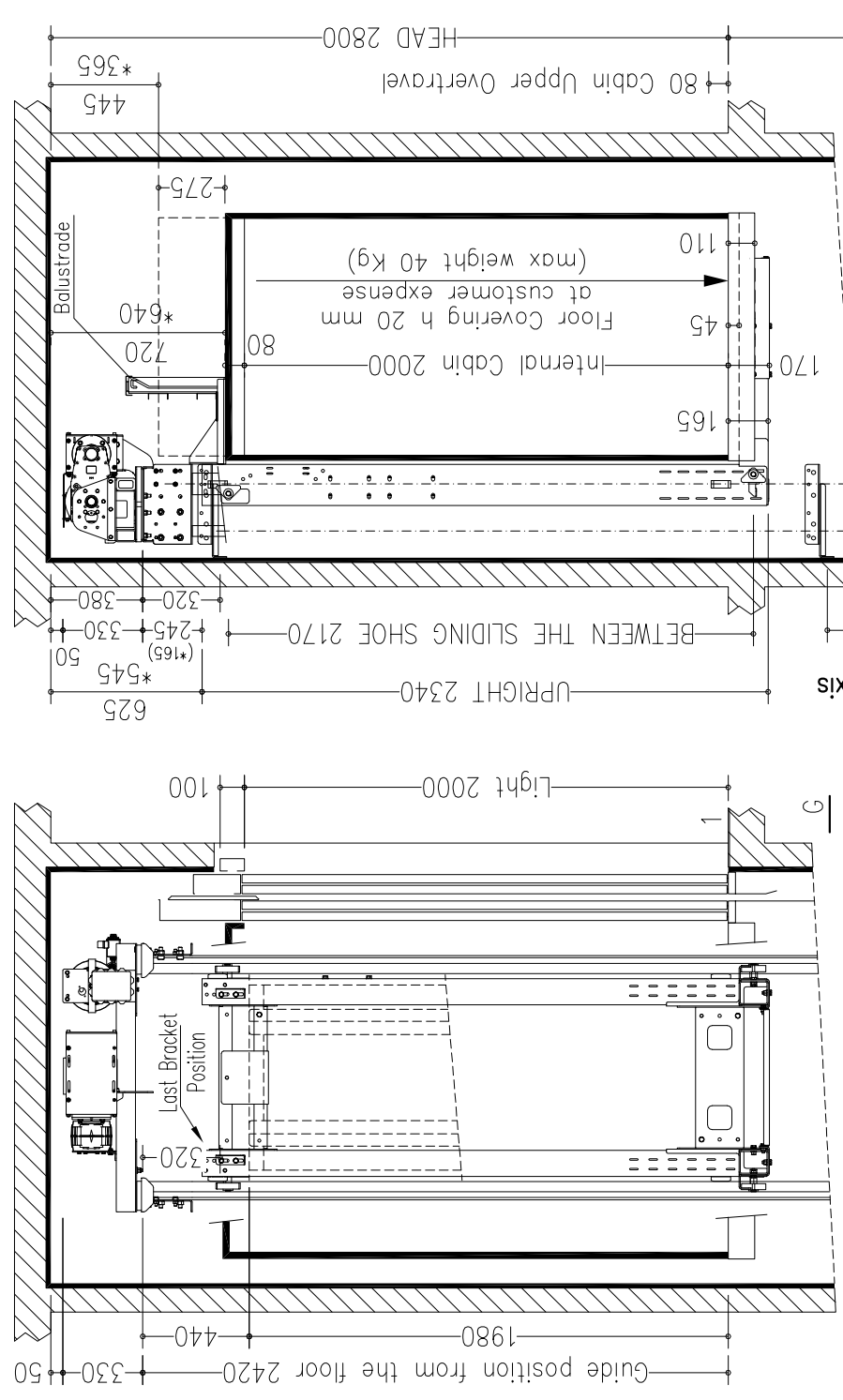
NOTES FOR THE CUSTOMER

THE HORIZONTAL AND VERTICAL LOAD BEARING STRUCTURES MUST BE ABLE TO SUSTAIN THE LOADS INDICATED. THE HOISTWAY SHAFT MUST BE VENTILATED ACCORDING TO THE EXISTING NORMATIVES AND CONSTRUCTED IN ORDER THAT ALL EQUIPMENTS INSIDE IT ARE PROTECTED FROM DUST, UNHEALTHY VAPOUR AND HUMIDITY. THE DIMENSIONS OF THE LEVATOR SHAFT MUST BE GUARANTEED WITH AN ALLOWANCES OF 1 CM AND THE WALLS MUST BE PERFECTLY PLUMBED. IN THE CASE IN WHICH THE PIT IS MORE THAN 500 MM BUILT-IN STEPS ARE NECESSARY (140X100X400). THE CUSTOMER HAS TO WATERPROOF THE PIT AFTER THE FIXING OF THE EQUIPMENT IN THE PIT BOTTOM. THE PROJECT IS COMPILED IN ACCORDANCE TO THE EXISTING NORMATIVES.

FOR APPROVAL OF EVERYTHING CONCERNING THE MASONRY PARTS OF THE SHAFT.

DATE SIGN

SECTION B-B
VENTILATION ON THE TOP OF THE SHAFT COMPLYING TO THE EXISTING NORMATIVES



reinforced-concrete slab on embankment

*QUOTES IN OVERTRAVEL